

# The Dynamic Effects of Fiscal Consolidation Episodes On Income Inequality: Evidence For 17 OECD Countries Over 1978-2013

Philipp Heimberger\*  
Preliminary draft. Do not cite!

## Abstract

Using an annual data set covering 17 OECD countries over the time period 1978-2013, this paper analyzes the dynamic effects of fiscal consolidation episodes on income inequality in the short- and medium-run. By estimating impulse response functions from local projections, we find that fiscal consolidations typically lead to an increase in income inequality. Baseline results suggest that in the aftermath of the start of a fiscal adjustment episode, the Gini coefficient of disposable income increases by about 0.4 percentage points in the short-run (in year three), and by 0.6 percentage points in the medium-run (in year seven). The impact of fiscal austerity measures on the income distribution is found to be more pronounced a) when the size of the fiscal consolidation package is large rather than small; b) when the duration of the adjustment is long instead of short; c) when the fiscal consolidation is based more on spending cuts than on tax increases; d) when the consolidation is started in the aftermath of a financial crisis rather than in a non-crisis episode; and e) when the adjustment falls into a period of low economic growth instead of high growth.

**JEL codes:** D63, E62, E64

**Keywords:** Income inequality; Income distribution; Austerity; Fiscal policy; Fiscal consolidation.

---

\*Vienna Institute for International Economic Studies and Institute for Comprehensive Analysis of the Economy, Johannes Kepler University Linz; heimberger@wiiw.ac.at, +43/15336610-12. This work was supported by the Chamber of Labour Vienna.

# 1 Introduction

In most OECD countries, income inequality has increased markedly since the mid-1980s (e.g. OECD, 2015; Atkinson and Morelli, 2010). Panel A of Figure 1 shows the evolution of the Gini coefficient of disposable (post-taxes and post-transfers) income for five selected OECD countries over the time period 1986-2014. It can be seen that income inequality in the US and in the UK has risen by several percentage points, while the trend also points upwards for Germany and Italy, with France being an exception, as inequality in France decreased over the time period covered. Furthermore, Panel B of Figure 1 plots the evolution of the Gini coefficient of disposable income in a sample of 17 OECD countries; both the unweighted average and the population-weighted average exhibit a general trend of rising inequality. While researchers have found evidence that a growing divide in incomes may cause social cohesion to deteriorate and public health problems to become more significant (Wilkinson and Pickett, 2009), recent research has also indicated that economies characterized by an unequal distribution of incomes may be subject to higher financial fragility and macroeconomic instability (e.g. Kapeller and Schütz, 2014; Kumhof *et al.*, 2015; Stockhammer, 2015). Since the financial crisis of 2008, fiscal consolidation measures have been a central feature of crisis management in several OECD countries, as countries push for government spending cuts and tax increases in order to cut fiscal deficits and bring down public debt (e.g. Lane, 2012; Blanchard and Leigh, 2014; Alesina *et al.*, 2015a). As the increase in income inequality and high public debt may be seen as two of the most pressing policy problems of our time, the consequences of fiscal consolidation measures on the income distribution are of high relevance. Past research has shown that fiscal policies have an important distributional role to play (e.g. Martinez-Vazquez *et al.*, 2012; International Monetary Fund, 2012); hence, well-informed policy-makers should be able to rely on robust estimates about how the income distribution develops in the aftermath of fiscal consolidation episodes. In this context, concerns about the (potential) effects of fiscal austerity on income inequality have grown over recent years (e.g. Rawdanowicz *et al.*, 2013; International Monetary Fund, 2014; OECD, 2015).

INSERT Figure 1 here.

While a substantial literature dealing with the effects of fiscal adjustments on economic growth and employment has developed since the outbreak of the global financial crisis (e.g. Holland and Portes, 2012; in 't Veld, 2013; Blanchard and Leigh, 2014; Guajardo *et al.*, 2014; Alesina *et al.*, 2015a; Yang *et al.*, 2015; Alesina *et al.*, 2015b; Jorda and Taylor, 2016), empirical research on the distributional effects of fiscal austerity measures has so far been comparatively underdeveloped. Researchers at the OECD and the IMF have intensified their work on the distributional effects of fiscal policy (Cournède *et al.*, 2013; OECD, 2015; International Monetary Fund, 2012; Rawdanowicz *et al.*, 2013; Ball *et al.*, 2013; International Monetary Fund, 2014; Furceri *et al.*, 2016; Woo *et al.*, 2016), and some peer-reviewed papers from recent years deal with different aspects of the distributional impact of fiscal consolidation measures (Agnello and Sousa, 2012, 2014; Schaltegger and Weder, 2014; Kaplanoglou *et al.*, 2015; Agnello *et al.*, 2016; Schneider *et al.*, 2016; Woo *et al.*, 2016). However, although Ball *et al.* (2013) and Furceri *et al.* (2016) have already done seminal work on the dynamic effects of fiscal consolidation episodes on income inequality, one of the major gaps in the existing literature concerns the lack of a large-scale and long-term analysis of the impact of fiscal consolidations on income inequality that also includes data for the years during and after the most recent global financial crisis. Furthermore, an in-depth investigation of the role played by the size, duration and the composition of fiscal consolidation episodes as well as the occurrence of financial crises has so far also been missing when it comes to studying the dynamic effects of fiscal consolidation episodes on income inequality.

This paper contributes to closing this gap in the existing empirical literature on the dis-

tributional effects of fiscal austerity. The aim is to formally analyze the dynamic impact of consolidation episodes on income inequality in a broad set of OECD countries over an extended period of time. For this purpose, we make use of an annual data set consisting of 17 OECD countries over the time period 1978-2013. Inspired by Jorda (2005), we estimate impulse response functions from local projections to obtain estimates about how the Gini coefficient (of market and disposable income, respectively) develops within eight years after the start of a fiscal consolidation episode. While Ball *et al.* (2013) and Furceri *et al.* (2016) – who also follow the methodology proposed by Jorda (2005) – were able to include data on fiscal consolidation measures until 2009, our analysis lengthens the covered time period (1978-2013), so that we also include data on the years after the outbreak of the global financial crisis. Furthermore, our analysis delivers novel insights into how the dynamic effects of fiscal austerity on the income distribution depend on the size and duration of fiscal consolidation programs, the composition between spending-based and tax-based measures, the economic growth situation, and on whether consolidations are started in the aftermath of financial crises. Over recent years, questions regarding the effects of economic policy decisions on income inequality have gained importance both in the economic research community (e.g. Piketty, 2014; Atkinson, 2015; Milanovic, 2016b) as well as in policy-making circles (e.g. Rawdanowicz *et al.*, 2013; International Monetary Fund, 2014; OECD, 2015); hence, the results presented in this paper should be of interest both to a wider community of economists working on distributional and macroeconomic issues as well as to policy-makers.

The rest of this paper is structured as follows. Section 2 provides a review on the literature dealing with the macroeconomic effects of fiscal consolidation measures. Section 3 explains the econometric approach followed in this paper. Section 4 presents the main empirical results and a number of extensions. Section 5 provides several robustness checks. Section 6 discusses the main results against the background of the existing econometric literature. Section 7 concludes.

## 2 Literature review

The financial crisis of 2008 has brought about "the revival of interest in the short-run macroeconomic effects of government spending and tax changes." (Ramey, 2011, p. 673). Fiscal stimulus measures that were implemented in many OECD countries to counteract the crisis (e.g. Khatiwada, 2009; Cottarelli *et al.*, 2014) came with the empirical question about the effects of increases in government spending and cuts in taxes on economic growth. On the one hand, stimulus packages in specific OECD countries such as the American Recovery and Reinvestment Act in the US were studied in empirical detail (e.g. Blinder and Zandi, 2010; Wilson, 2012). On the other hand, a series of papers delivered more general insights into how the size of the fiscal multiplier might change with the business cycle, monetary policy accommodation, the composition of the respective fiscal measures (spending-based vs. tax-based), the initial level of public indebtedness, the exchange-rate regime, the openness of the economy, spillover effects with other economies, and the international business environment (e.g. Christiano *et al.*, 2011; Ramey, 2011; Woodford, 2011; Barrell *et al.*, 2012; DeLong and Summers, 2012; Eggertsson and Krugman, 2012; Ilzetzki *et al.*, 2013; Gechert and Rannenberg, 2014).

The turn towards fiscal consolidation from 2010 onwards – especially in Europe (e.g. Lane, 2012) – triggered the development of a new empirical literature that is specifically concerned with estimating fiscal consolidation multipliers in order to assess the effects of fiscal austerity on growth and employment (Blanchard and Leigh, 2014; Guajardo *et al.*, 2014; Alesina *et al.*, 2015a; Yang *et al.*, 2015; Alesina *et al.*, 2015b; Jorda and Taylor, 2016). The policy-relevant controversy is about whether consolidation efforts can be 'expansionary', i.e. have a positive effect on growth – even in the short-run. After Alesina and Ardagna (2010) and some other authors from the "expansionary austerity" strand of the literature had argued that periods of large cuts in government spending can actually have positive growth effects (Blyth, 2013; Dellepiane-

Avellaneda, 2015), a prominent study by Blanchard and Leigh (2014) provided econometric evidence in contradiction to the 'expansionary austerity hypothesis'. Blanchard and Leigh (2014) estimated that for each additional percentage point of fiscal consolidation measures, institutions such as the IMF and the European Commission had underestimated their negative growth effects by about 1 percentage point. The IMF and other institutions had assumed that the multiplier would be about 0.5; hence, the results presented by Blanchard and Leigh (2014) imply that fiscal multipliers during 2010/2011 in their sample of advanced economies stood at about 1.5. Over the last years, researchers have repeatedly taken up the task of assessing the GDP losses caused by fiscal austerity in Europe (e.g. in 't Veld, 2013; Gechert *et al.*, 2015; Heimberger, 2017), while other empirical studies have looked at a larger sample of European and non-European OECD countries over a time frame ranging back to the 1970s in order to reassess how growth is being affected in the aftermath of fiscal consolidation episodes – with the main finding that fiscal consolidations are always contractionary, while the highest multipliers are found in periods of economic slack (Guajardo *et al.*, 2014; Yang *et al.*, 2015; Jorda and Taylor, 2016).

So far most of the existing studies on the macroeconomic effects of fiscal consolidation measures have focused on the effects of fiscal adjustments on economic growth; the distributional effects of austerity have comparatively enjoyed fewer research efforts. Nevertheless, it has to be recognized that both the IMF and the OECD have over recent years started to gather evidence on how fiscal consolidations affect the income distribution (Cournède *et al.*, 2013; OECD, 2015; International Monetary Fund, 2012; Rawdanowicz *et al.*, 2013; Ball *et al.*, 2013; International Monetary Fund, 2014; Furceri *et al.*, 2016; Woo *et al.*, 2016). While the IMF has raised concerns that "preventing a significant worsening of the income distribution during the [fiscal] adjustment phase is critical to the sustainability of deficit reduction efforts, as a consolidation that is perceived as being fundamentally unfair will be difficult to maintain" (International Monetary Fund, 2012, p. 50), the OECD stresses that fiscal consolidation programs may "undermine long-term growth and exacerbate income inequality. It is therefore important for governments to adopt consolidation strategies that minimise these adverse side-effects." (Cournède *et al.*, 2013, p. 6) In this context, Rawdanowicz *et al.* (2013) point out that fiscal consolidations might increase income inequality via several channels. An important channel might be an increase in unemployment that widens the disparities in market incomes; furthermore, cuts in social transfers may affect households in lower parts of the income distribution the most, and a rollback of public programmes benefiting the poor might also increase disposable income inequality.

Table 1 presents a summary of the relevant econometric literature on the link between fiscal consolidation measures and income inequality. The main problem for empirical researchers is that obtaining high-quality data on fiscal consolidation measures is fraught with difficulties. As government revenues and spending move with the business cycle, a typical endogeneity problem arises: when it comes to studying various effects of fiscal adjustments, researchers are interested in identifying fiscal measures that are explicitly motivated by the policymakers' desire to cut the fiscal deficit; and this means that the effect of automatic stabilizers on the budget balance has to be accounted for. There are two main approaches in the macroeconometric literature that deal with this endogeneity problem (Yang *et al.*, 2015). The first approach for identifying the timing and size of fiscal consolidation measures can be called the 'conventional approach', which is based on calculating changes in cyclically-adjusted fiscal data. Basically, the headline fiscal balance is corrected for the effects of the business cycle on government revenues and expenditures. Institutions such as the IMF and the European Commission perform cyclical adjustments by estimating the fiscal balance that would be obtained if the economy operated at potential output, which requires some model-based measure of potential output. After correcting for the cyclical component of the fiscal balance, one may additionally account for so-called budgetary one-off effects, such as costs that result from bailing-out financial institutions – yielding the 'structural budget balance' (Mourre *et al.*, 2014). The intensity of fiscal consolidation measures can then

be calculated by looking at changes in the estimated cyclically-adjusted fiscal data (e.g. Alesina and Ardagna, 2010; Afonso, 2010; Blanchard and Leigh, 2014). From Table 1, it can be seen that papers 1, 2 and 8 follow the 'conventional approach' of using cyclically-adjusted fiscal data.

INSERT Table 1 here.

However, a typical criticism in the literature is that – due to problems related to estimating the fiscal balance that would be obtained if the economy operated at non-observable potential output (e.g. Perotti, 2013; Carnot and de Castro, 2015) – changes in cyclically-adjusted fiscal data might not only reflect the policymakers' desire to cut the fiscal deficit. Therefore, there is a second major strategy in the macroeconomic literature for overcoming the endogeneity problem, which is called the 'narrative approach'. In a seminal paper, Romer and Romer (2010) identify size and timing of fiscal policy measures from budgets, budget documents and policy papers by accounting for the policy-makers' motivations for implementing the respective measures. By doing so, they construct an "exogenous" measure of fiscal policy, which should be uninfluenced by economic conditions. Considering that the usage of cyclically-adjusted fiscal data can lead to biased estimates on the actual impact of fiscal consolidation programs (e.g. Perotti, 2013; Guajardo *et al.*, 2014), it comes as no surprise that nearly all of the recent papers in the relevant macroeconomic literature follow the 'narrative' approach to identify fiscal adjustment episodes. Table 1 indicates that papers 3, 4, 5, 6, 7 and 9 all use the narrative data on fiscal consolidations in OECD countries collected by IMF economists for the period 1978-2009 (DeVries *et al.*, 2011). Their data focus on discretionary changes in government spending and taxes that were motivated by the policymakers' desire to reduce the budget deficit – and not by a response to prospective economic conditions. Hence, this instrumental variable should by construction be unburdened by the endogeneity problem.

Using the narrative-approach fiscal consolidation data provided by DeVries *et al.* (2011), a number of studies find that fiscal consolidations typically lead to an increase in disposable income inequality (Ball *et al.*, 2013; Agnello and Sousa, 2014; Furceri *et al.*, 2016; Woo *et al.*, 2016)), while Agnello and Sousa (2012) – who use fiscal consolidation data based on the 'conventional approach' – report the reverse result. Schneider *et al.* (2016) take a different approach than all those papers, as they estimate a parametric Lorenz curve model and then use Gini-like indices of income inequality to assess distributional changes at the top and bottom of the distribution, finding that more drastic fiscal consolidations are associated with a widening in income dispersion, as inequality rises at the top. Schaltegger and Weder (2014) focus on the question of whether increases in inequality that are due to fiscal consolidations depend on the political party or government type. They find that coalition governments do significantly better than single party and minority governments when it comes to addressing distributional concerns. In this context, Kaplanoglou *et al.* (2015) argue that "fairness in consolidation" – related to measures such as improvements in the targeting of social transfers or higher public outlays on labor market programs – increases the odds of successfully introducing a fiscal adjustment program. In an earlier study, Mulas-Granados (2005) analyzes the effects which fiscal adjustments with different compositions might have on income inequality. He finds that expenditure-based consolidations perform better in terms of economic growth than revenue-based adjustments, while the former increase income inequality more than the latter. Ball *et al.* (2013), Furceri *et al.* (2016) and Agnello and Sousa (2014) also report that spending-based consolidations are more detrimental than tax-based adjustments in terms of their consequences for the income distribution. While Agnello *et al.* (2016) consistently find that income dispersion increases more with spending cuts, it has to be noted that they focus on the effects of national fiscal adjustments on income inequality in the European regions, with the main finding that fiscal adjustments exacerbate regional disparities in income.

From this review of the relevant econometric literature, summarized in Table 1, it becomes

apparent that none of the reviewed papers – with the exception of Schneider *et al.* (2016) – has considered data for the years from 2010 onwards. Moreover, although Ball *et al.* (2013) and Furceri *et al.* (2016) have made important contributions in terms of studying the effects of fiscal adjustments on income inequality in both the short-run and the medium-run, their analyses of the dynamic effects of fiscal consolidation episodes on the income distribution come without a comprehensive consideration on how the size, duration and composition of fiscal consolidation measures, as well as the timing of the business cycle might have an impact on their results about the effects of austerity on income inequality. In what follows, this paper contributes to closing these gaps in the existing literature.

### 3 Empirical study design

We estimate the distributional effects of fiscal consolidation measures over the short- and medium-run. In doing so, we follow the methodology proposed by Jorda (2005), who estimates impulse response functions (IRFs) from local projections. Jorda (2005) shows that the standard linear projection is a direct estimate of the typical impulse response, as derived from a traditional vector autoregression (VAR). In principle, there are other possibilities to measure dynamic effects; in particular, one could estimate a Panel Vector Autoregression (PVAR) or an Autoregressive-Distributed-Lag Model (ARDL). However, in our case both options are inferior to the local projections method. The VAR approach suffers from identification and size-limitation problems, which is not the case for the more flexible local projections method (Gupta *et al.*, 2017, p. 18-19). And the stability of IRFs obtained from an ARDL is undermined by their lag-sensitivity (e.g. Ball *et al.*, 2013). Moreover, Cai and DenHaan (2009) point out that when the dependent variable is very persistent (which is the case for Gini data), statistically significant long-run effects may result from "one-type-of-shock models"<sup>1</sup> – a problem that does not haunt the local projections method since lagged dependent variables are not used to derive the IRFs, but only enter as controls. Another advantage of the Jorda (2005) method is that the uncertainty around the IRFs can be estimated directly from the standard errors of the estimated coefficients without any need for Monte Carlo simulations.

In the context of estimating the effects of fiscal adjustments on income inequality, Ball *et al.* (2013) and Furceri *et al.* (2016) have already employed the local projections method introduced by Jorda (2005). However, the empirical investigation in this paper goes beyond these previous attempts to study the dynamic effects of fiscal austerity. First, we cover a longer time period, as we also include data on the crisis years 2010-2013, thereby covering the more extensive time period 1978-2013. Second, we account for a richer set of control variables. Third, we extend our analysis by various relevant aspects, such as the size, duration and composition of fiscal adjustments and the timing of the business cycle. Fourth, we employ a more comprehensive set of robustness checks.

#### 3.1 Econometric strategy

Our regressions are based on the following equation, which is estimated for each future time period  $k$  (with  $k = 1, \dots, 8$ ),<sup>2</sup> allowing us to obtain local projections on how income inequality changes *following* the start of a fiscal consolidation episode:

$$G_{i,t+k} - G_{i,t} = \beta_k D_{i,t} + \gamma_k Z_{i,t} + \sum_{j=1}^l \delta_j^k \Delta G_{i,t-j} + \zeta_i^k + \eta_t^k + \epsilon_{i,t}^k \quad (1)$$

<sup>1</sup>One-type-of-shock would mean that the response of the dependent variable is always the same, no matter of why there is a shock to the system.

<sup>2</sup>By looking at eight future time periods, we follow the relevant existing literature on the dynamic effects of fiscal consolidation measures (Ball *et al.*, 2013; Furceri *et al.*, 2016).

In equation 1,  $G$  represents our measure of income inequality, i.e. the Gini coefficient of (in most cases: disposable) income, where the data sources used throughout the analysis will be explained below (see section 3.2);  $D_{i,t}$  is a dummy variable that takes the value of 1 for the starting year of each fiscal consolidation episode and 0 otherwise;  $Z_{i,t}$  is a vector of additional control variables, which will be introduced in section 3.2;  $\Delta G_{i,t-j}$  are the lags in the change of the measure of income inequality, where we set the number of lags  $l$  to two,<sup>3</sup> although we show later on that the estimation results are robust to different numbers of lags;  $\zeta_i^k$  are country fixed-effects;  $\eta_t^k$  are period fixed-effects; and  $\epsilon_{i,t}^k$  represents the stochastic residual. Equation 1 is estimated by using the panel-corrected standard error estimator (PCSE). As shown by Beck and Katz (1995), the OLS-PCSE procedure is well-suited for time-series cross-section models such as ours, where the number of years covered is not much larger than the number of countries in the cross-sectional dimension of the data. The main reason for the superior performance of the OLS-PCSE estimation strategy – compared to the Parks estimator and other Feasible Generalized Least Squares estimators – is that the method proposed by Beck and Katz (1995) is well-suited to addressing cross-section heteroskedasticity and autocorrelation in the residuals, allowing us to avoid biased standard errors.

### 3.2 Data

As consolidation data from the 'conventional approach' imply the risk of obtaining biased estimates on the macroeconomic effects of fiscal austerity (e.g. Perotti, 2013; Guajardo *et al.*, 2014), the empirical analysis in this paper builds on fiscal consolidation measures that were identified according to the 'narrative approach'. Cyclically-adjusted data based on the 'conventional approach' used by Afonso (2010) will only be used for the purpose of checking the robustness of our results. The 'narrative' fiscal consolidation data includes 17 OECD countries (Australia, Austria, Belgium, Canada, Denmark, Finland, France, Germany, Ireland, Italy, Japan, Netherlands, Portugal, Spain, Sweden, the United Kingdom, and the United States of America). The size of the country group and the years that we cover in our data are dictated by data availability on this 'narrative' fiscal consolidation variable. To identify episodes of cuts in government spending and/or increases in taxes which aim at reducing the budget deficit, we obtained annual data from DeVries *et al.* (2011) for the time period 1978-2009. By using the same 'narrative methodology' as DeVries *et al.* (2011), Alesina *et al.* (2015a) have extended this dataset for the years 2010-2013. There are 60 consolidation episodes in total, covering 214 years with fiscal consolidations over the time period 1978-2013. The average size of the 60 fiscal consolidation programs amounts to 4.2% of GDP (compared to 1.2% for the average yearly adjustment).

Table 2 summarizes the occurrence of fiscal consolidation episodes in our dataset. It can be seen that many fiscal consolidations actually come in the form of packages that span two or more years. The longest adjustment period was started by Canada in 1984 and lasted until 1997. For the period after the financial crisis, it can also be seen that fiscal adjustments were in general bundled into multi-year packages. For example, Ireland's consolidation lasted from 2009 to 2013, and countries such as Austria, Denmark and Germany consolidated from 2011 to 2013. Table 2 presents the 60 fiscal consolidation episodes (that were bundled into packages of one or several years). The average duration of the fiscal consolidation programmes is 3.5 years.

INSERT Table 2 here.

For the measure of income inequality ( $G$ ), we obtained data on Gini coefficients for market income and disposable income from Version 5.1 of the Standardized World Income Inequality

---

<sup>3</sup>We control for lags in the change of the Gini since the future change in the Gini coefficient can be expected to depend on past changes.

Database SWIID (Solt, 2016). Gini coefficients are bounded between 0 – each reference unit receives exactly the same share of income – and 100, which would imply that a single reference unit gets all the income. The average Gini of disposable market income in our data set is 28.4, with a minimum of 16.5 and a maximum of 37.6. It has to be noted that the panel data is unbalanced, since Solt (2016) does only provide Gini data for 550 out of 612 possible observations ( $T=36$ ;  $N=17$ ). In the robustness check section, we will show that results do not change markedly when we interpolate the data in order to balance the panel. In the baseline regressions, however, we take the data from Solt (2016) as it is – without interpolating the missing values.<sup>4</sup> As we are mainly interested in how income inequality changes after taxes and transfers, the baseline results will be based on net (disposable) Gini data. Figure 2 shows the evolution in the disposable Gini coefficient for the 17 OECD countries in our country sample.

INSERT Figure 2 here.

There are three main advantages of using the SWIID dataset. First, the data ensure that income inequality across countries is measured in a harmonized way. Second, the data include a large group of countries and allow us to obtain long time-series on Gini coefficients of market and disposable income for all the 17 OECD countries in our sample. Third, comparability across countries is enhanced by a transparent procedure of how the data was collected. As a robustness check, we will later on also use the database provided by Milanovic (2016a), who offers an 'All the Ginis' index for disposable income by merging several data sources.

We control for five additional variables (see Vector  $Z_{i,t}$  in equation 1): First, to consider possible effects of international trade on (future) income inequality, we include the change in trade openness (measured as the sum of imports and exports in relation to GDP), where data was obtained from the European Commission's AMECO database. Second, we control for the change in the average years of schooling (Barro and Lee, 2013) – where data come from the International Human Development Indicator – in order to capture possible effects of education on future income inequality. Third, we include GDP growth (AMECO data), as a decrease in economic activity may lead to an increase in the debt-to-GDP ratio via the workings of automatic stabilizers, so that the probability of fiscal consolidation measures might increase. Fourth, we account for the change in the unemployment rate (OECD data), where the rationale is the same as for considering GDP growth. Fifth, we control for the growth rate in Total Factor Productivity as a proxy for capturing the effects of technological change on income inequality (e.g. Acemoglu, 2003; Roser and Crespo-Cuaresma, 2016), where data were obtained from the AMECO database. These additional regressors are typically controlled for in the empirical literature on the determinants of income inequality (e.g. Acemoglu, 2003; Ball *et al.*, 2013; Roser and Crespo-Cuaresma, 2016; Woo *et al.*, 2016). Hence, the model presented in equation 1 covers the most relevant control variables from the empirical literature. In the robustness check section, we will also report the results that we obtain when we exclude the additional regressors in order to show that there is no issue of multicollinearity. With another robustness check, we will introduce additional lags for GDP growth and the change in the unemployment rate, since it might be argued that these variables have lagged impacts on the relation between fiscal consolidation and future income inequality.

---

<sup>4</sup>This approach seems preferable, because for the 62 observations for which there is no harmonized SWIID data, we do not really know what the Gini index is. The choice of an interpolation method would in the end be somewhat arbitrary, so that it seems preferable to leave the panel unbalanced. Nevertheless, interpolated data will be used as a robustness check.



## 4 Results

By following the estimation strategy outlined above, we estimate the distributional effects *following* the start of a fiscal consolidation episode. Since we include country fixed effects in our regressions, the results should be interpreted in comparison to a baseline country-specific trend. By running regressions on equation 1, impulse response functions based on local projections can be obtained by plotting the estimated consolidation coefficients  $\beta_k$  for each future time period  $k$ . Grey areas in all the plots below indicate the confidence bands of the impulse response functions, calculated by using one standard error bands of the estimated coefficients; in doing so, we follow Ball *et al.* (2013) and Furceri *et al.* (2016) in order to enhance comparability with previous studies. Hence, Figure 3 graphically depicts the estimated response of income inequality to the shock of a fiscal consolidation episode. The local projection is done from year zero, with the first impact of the shock felt in the first year. The path of the local projection is then constructed to year eight; the figure shows the deviations from the levels in year zero. It can be seen from the plot that fiscal consolidation episodes typically have long-lasting effects on income inequality, as the Gini coefficient increases following the start of a fiscal consolidation episode.

From Panel A of Figure 3, it can be seen that for Gross (market income) Gini data from Solt (2016), local projections suggest that income inequality increases by 1.07 percentage points (ppts.) in year three, peaking at 1.20 ppts. in year seven. For disposable (after taxes and transfers) Gini data, the increase is 0.35 ppts. in year 3, with a peak of 0.60 ppts. in year 5 (see Panel B of Figure 3).<sup>5</sup> The finding that the effect of consolidation episodes on market income is stronger than on disposable (after-taxes, after-transfers) income may be expected if the increase works through the channels of higher (long-term) unemployment – fiscal austerity decreases demand, lowers growth and pushes up unemployment (e.g. Guajardo *et al.*, 2014; Jorda and Taylor, 2016) –, skewing the distribution of market incomes (Ball *et al.*, 2013; Furceri *et al.*, 2016). However, the social safety net (consisting of unemployment benefits and other types of social spending) may still be able to bridge parts of the consolidation shock to income inequality. As a first robustness check, we complement our results that are based on a binary fiscal consolidation dummy by running regressions on equation 1 with a continuous fiscal consolidation variable ( $D_{i,t}$ ), which expresses the size of fiscal consolidation in % of GDP (DeVries *et al.*, 2011; Alesina *et al.*, 2015a). As can be seen from Panel C and D of Figure 3, the result that a fiscal consolidation shock pushes up inequality is not sensitive to using the binary or the continuous instrument for fiscal consolidation.

In what follows, we take the local projections results related to the net Gini data and the binary 'narrative' fiscal consolidation variable as our baseline (Panel B of Figure 3). We mainly want to focus on how income inequality (post-taxes, post-transfers) changes in the years after a fiscal consolidation episode has started. Moreover, the existing literature has also focused on using a binary consolidation dummy indicating when a fiscal consolidation episode takes place (Ball *et al.*, 2013; Agnello and Sousa, 2014; Furceri *et al.*, 2016). Hence, we prefer to use the binary dummy variable for the 'fiscal consolidation treatment' in order to foster comparability, where starting periods of fiscal consolidations have the value 1, and all other periods are treated as zeroes. However, as indicated by the results in Figure 3, the precise choice of the instrument variable makes little difference in terms of the overall results.

INSERT Figure 3 here.

---

<sup>5</sup>Notably, the uncertainty around the estimates is higher for the net Gini results.

## 4.1 Do size, duration and composition of consolidation programs matter?

As a first extension to our baseline analysis, we consider the characteristics of fiscal consolidation episodes in terms of the size of the fiscal adjustment. The average size of the consolidation programs in our sample is 4.2% of GDP. 17 of the 60 fiscal consolidation programs are larger than the average. In what follows, we construct a new dummy variable for large-sized fiscal consolidations, which takes the value of 1 for the starting period of those fiscal adjustment packages that are larger than the average, and 0 otherwise. Correspondingly, the dummy for small-sized consolidations takes the value of 1 for the starting year of consolidation packages smaller than the average of 4.2%. From Figure 6, it can be seen that large-sized consolidations have a much more pronounced impact on income inequality, where it is notable that all of the inequality-enhancing impact takes place in the medium-term; in year seven after the start of a large-sized consolidation episode, the Gini has increased by 1.3 ppts. (see Panel A of Figure 6). In contrast, most of the impact of small-sized consolidations on the income distribution materializes in the short-run; however, it has to be noted that the uncertainty around those estimates is substantial. The medium-term increase in the Gini is significantly less pronounced for small-sized consolidations, coming in at 0.4 ppts. in year five (see Panel B of Figure 6), which is not even half of the impact of large-sized consolidations in year five.

The duration of the fiscal consolidation episode might also matter. Hence, we distinguish between consolidation episodes longer than the average of 3.5 years, and those shorter than the average. In our dataset, 22 out of 60 episodes are labelled as "long consolidation episodes". As can be seen from Panel C and Panel D of Figure 4, adjustments with a long duration had a rather strong impact on inequality; the Gini of disposable income increased by 1.3 ppts. in year seven. For short episodes, in stark contrast, we do not find that the medium-term impact on inequality is different from zero.

Furthermore, we analyze whether the composition of fiscal consolidation measures matters for the effects on income inequality. Our data allows us to distinguish between measures that are based on spending cuts and tax increases. Hence, we are able to estimate equation 1 separately for spending- and tax-based adjustments. The results depicted by Figure 4 suggest that spending-based adjustments have more pronounced effects on income inequality. The standard definition of the consolidation dummies implies a value of 1 whenever a fiscal consolidation episode starts, and 0 otherwise. However, there are concerns that the corresponding results might be biased, because most of the fiscal adjustments in the database involve both spending and tax-based measures. This issue is addressed by using an alternative definition for a) episodes where tax-based consolidations were larger than spending-based adjustments, and b) for episodes where spending-based consolidations were larger than tax-based adjustments.<sup>6</sup> As can be seen from Figure 4, results from both the standard and the alternative definition suggest that spending-based adjustments have more pronounced effects on income inequality.

## 4.2 Does the timing of the business cycle matter?

Does it matter whether a country starting a fiscal consolidation episode is doing so from a rather strong or weak position of economic growth? To answer this question, we begin by checking whether the impacts of fiscal adjustments differ in periods of high and low economic growth. For the purpose of characterizing consolidation episodes marked by rather low growth, we construct a dummy variable that takes the value of 1 for all consolidation periods where the real GDP growth rate was lower than 2% at the start – and 0 otherwise. Correspondingly, we construct a fiscal consolidation variable that captures periods of fiscal consolidation that started under relatively high economic growth (>2%). With this distinction between high- and low-growth episodes, we follow Agnello and Sousa (2014, p. 13). Given this definition, 32 of the 60 consolidation episodes in our sample were started when growth was low. We find that income

---

<sup>6</sup>Following this alternative definition, our data consist of 26 tax-based and 34 spending-based episodes.

inequality increases markedly stronger for low-growth fiscal adjustments. As can be seen from Panel A of Figure 6, the Gini increases by 0.6 ppts. in year three, rising to 0.8 ppts. in the seventh year. Panel B of Figure 6 shows that, in stark contrast, income inequality is typically less affected if an adjustment episode starts during relatively high growth. This finding suggests that business cycle conditions do not only matter for the size of fiscal multipliers (e.g. DeLong and Summers, 2012; Blanchard and Leigh, 2014; Gechert and Rannenberg, 2014; Qazizada and Stockhammer, 2015), but that they may also be important regarding the distributional effects of fiscal consolidations.

INSERT Figure 4 here.

INSERT Figure 5 here.

It might also make a difference whether the start of a fiscal consolidation episode was preceded by a systemic banking or currency crisis. As Reinhart and Rogoff (2011) have shown by means of long historical time series, sovereign debt crises are typically preceded or coincide with banking crises, which may be due to governments taking on a large pile of debt to ensure that the ailing banking sector does not collapse. As a consequence of sovereign debt crises, governments are regularly forced to implement fiscal consolidation measures in order to bring down fiscal deficits and public debt (e.g. Lane, 2012). To investigate whether the impact of fiscal adjustments on income inequality depends on whether or not they were preceded by a systemic crisis, we identify those fiscal consolidation episodes that started within three years after the occurrence of a financial crisis, using the data set provided by Valencia and Laeven (2012). 16 of the 60 consolidation episodes in our data set were started in the aftermath of a financial crisis. Comparing Panel C and Panel D of Figure 6, estimation results suggest that fiscal consolidations that start after financial crises have a stronger impact on income inequality than those episodes that start in non-financial-crisis times. Specifically, in year five after the start of a financial-crisis-related consolidation episode, income inequality has increased by about 1.2 ppts. – compared to a much lower 0.4 ppts. in the non-financial-crisis-related cases.

INSERT Figure 6 here.

## 5 Robustness checks

In order to further test the robustness of the baseline results reported in the previous section, we perform several robustness checks, as we drop and add control variables, consider variations in the disposable Gini data, use alternative fiscal consolidation data, account for time-outliers, investigate the impact of excluding time- and period-fixed effects, and vary the number of lags of the dependent variable. We start by showing that dropping the additional control variables (collected in  $Z_{i,t}$  in equation 1) does not change the results; hence, there seems to be no issue of multicollinearity (see Panel A and B in Figure 7). Second, we account for potential concerns that GDP growth and the change in the unemployment rate might have an effect on the relationship between fiscal consolidation and future income inequality only with lags. Panel C and D of Figure 7 show that including one and two lags of these two additional controls, respectively, does not change the results. Third, we vary data on the Gini of disposable income, by using data

from Milanovic (2016a) instead of the SWIID data provided by Solt (2016).<sup>7</sup> Figure 7 suggests that the results remain broadly unchanged (see panels A and E of Figure 7), although it has to be noted that the impacts on inequality are larger when we use the Milanovic data. Fourth, we investigate whether the 62 missing values out of 612 observations from the Gini data provided by Solt (2016) play a role (see Figure 2). We use linear interpolation to balance the panel data. Panel F of Figure 7 shows that the results do not change much in comparison to Panel A of the same Figure: in year three, the increase in the Gini is 0.2 ppts. and in year seven 0.5 ppts.<sup>8</sup>

INSERT Figure 7 here.

Fifth, we investigate whether the results hold when we use an alternative dummy variable for fiscal consolidation episodes. Instead of only accounting for the 60 fiscal consolidation episodes depicted in Table 2, we construct an alternative dummy that takes the value of 1 for all 214 years in which fiscal consolidation measures are recorded in our dataset. As can be seen from Panel A of Figure 8, the results prove to be very robust. In year 3 year, the increase of the Gini is 0.4 ppts. based on the standard fiscal consolidation dummy (including only 60 fiscal adjustment episodes), and 0.5 ppts. with the alternative definition; in year seven, the difference is similarly small (0.5 ppts. vs. 0.6 ppts.).

Sixth, there might be concerns that time-outliers are influencing our results, as a few years in which many countries at the same time were implementing consolidation measures might be driving the results. Following Agnello and Sousa (2014), we therefore exclude – for the 1980s, the 1990s and from 2000 onwards, respectively – those years with the highest number of fiscal consolidation episodes across all 17 countries. Hence, we eliminate 1984, where 9 out of 17 countries recorded fiscal consolidation measures; we exclude 1997 (13 consolidations); and we drop 2011, 2012 and 2013 from our data, as each of those record 11 consolidations. However, results remain very robust when we control for those time outliers, as shown by Panel B of Figure 8.

INSERT Figure 8 here.

With the seventh step of our robustness analysis, we check whether the results hold when we use the 'conventional approach' to identifying fiscal consolidation episodes. Specifically, we follow the methodology proposed by Afonso (2010), who documents the start of a fiscal episode when either the change in the primary cyclically-adjusted budget balance is at least one and a half times the standard deviation in one year (in relation to the whole panel sample), or when the change in the primary cyclically-adjusted budget balance has been at least one standard deviation on average in the last two years.<sup>9</sup> From Panel B in Figure 9, it can be seen that the result that fiscal consolidation episodes push up inequality holds, although the short-term increase is found to be smaller when we use the Afonso (2010) approach, while the medium-term impact is more pronounced.<sup>10</sup>

---

<sup>7</sup>It has to be noted that we had to interpolate the Milanovic data in order to get a coherent and large enough number of observations, whereas the SWIID data were used in terms of the numbers provided by Solt (2016), without any additional interpolation exercises.

<sup>8</sup>Eventually, the choice of the interpolation method is always kind of arbitrary, since we do not know the Gini values for the missing observations; hence, the preference for avoiding interpolation in our baseline calculations.

<sup>9</sup>Data on the consolidation dummy were obtained from Furceri *et al.* (2016, pp. 16-17).

<sup>10</sup>A major criticism of the 'conventional approach' of measuring fiscal adjustments is not only that cyclically-adjusted budget numbers might be biased due to estimation problems of the output gap (Carnot and de Castro, 2015); furthermore, statistical rules for defining fiscal adjustment episodes, such as the one used by Afonso (2010), suffer from some degree of arbitrariness, as a change of the statistical rule regarding the magnitude and the duration of adjustments might lead to substantial changes in the consolidation periods that are eventually identified. In this section, we only employ the approach put forward by Afonso (2010) as a check

INSERT Figure 9 here.

INSERT Figure 10 here.

Eighth, reading Nickell (1981) raises concerns that our estimation results might be biased as we include both a lagged dependent variable and country fixed effects. However, Nickell (1981) points out that the order of bias is  $1/T$ , and this number is small for our dataset, so that the relatively long time dimension allows us to expect that this concern is not of high importance for our analysis. Additionally, Teulings and Zubanov (2010) point out that local projections might be biased because country-fixed effects may interact with country-specific arrival rates of fiscal consolidation episodes. Panel D of Figure 9 mitigates the concerns raised by the works of Nickell (1981) and Teulings and Zubanov (2010), as our results do not change markedly when we drop country fixed effects from our regressions, although a temporary spike can be seen in the impulse response function in year 3. Besides from that spike, however, the impact of fiscal consolidation episodes on income inequality is nearly of the same size if one compares the results from excluding country fixed effects to the baseline results that include country fixed effects. As a final robustness check, we analyze whether variations in the number of lags regarding the change in the Gini index  $G$  controlled for in equation 1 has an impact on the results. Figure 10 shows that the baseline results are robust to varying the number of lags.

## 6 Discussion

The results presented in this paper suggest that fiscal consolidation episodes have long-lasting effects on income inequality, measured in terms of the Gini coefficient of disposable household income. Notably, our baseline finding for the short-term impact of austerity on income inequality – an increase in the Gini by 0.35 ppts. in year three after the start of a fiscal consolidation episode – is consistent with earlier findings in the literature. Agnello and Sousa (2014) report that fiscal consolidation episodes lead to an increase in the Gini index of about 0.3 ppts. in the short-run. In comparison, Ball *et al.* (2013) find that three years after a fiscal adjustment episode, income inequality has increased by a little more than 0.2 ppts. The baseline estimates of Ball *et al.* (2013) of an increase in the Gini of disposable income by 0.7 ppts. after 7 years also do not deviate much from our 0.57-ppts.-finding. The main difference to the existing literature is that our study includes data on the crisis years 2010-2013, while we also consider a more comprehensive set of additional variables (trade openness, average years of schooling, TFP growth) and provide further extensions and robustness checks. In a nutshell, we confirm results from the earlier literature, which finds that fiscal consolidation measures – identified by the ‘narrative approach’ (DeVries *et al.*, 2011) – typically lead to an increase in income inequality in the short- and medium-run. Our finding that spending-based adjustment episodes have a more pronounced effect on inequality than tax-based consolidations is also in line with the previous literature (Mulas-Granados, 2005; Ball *et al.*, 2013; Agnello and Sousa, 2014; Furceri *et al.*, 2016; Woo *et al.*, 2016).

The baseline results discussed here should be interpreted as the average response of income inequality after introducing a fiscal consolidation episode as a shock to the system. The average Gini of disposable income in our data set is 28.4. An increase of 0.35 ppts. in the short-term therefore pushes up income inequality by 1.2% (on average), and a rise of 0.57 ppts. in the

---

of whether we would find very different results regarding the effects of austerity on income inequality if we use the ‘conventional approach’ instead of the ‘narrative approach’. Our findings suggest that this is not the case, i.e. the results remain quite robust.

medium-term corresponds to an increase by 2.0%. However, our extensions suggest that the effects may depend both on the size, duration and composition of the consolidation – where large-sized, long-lasting and spending-based episodes have more pronounced effects – as well as on the timing of the business cycle, where we find that programs started in the aftermath of financial crises and when growth was low have a more detrimental effect on the income distribution. Notably, our data consist of only four consolidation episodes that were large-sized, of long duration, spending-based and started both in the aftermath of a financial crisis and when growth was low.<sup>11</sup>

In what follows, we use a couple of country examples to provide a better intuition about the economic relevance of our findings. Nevertheless, it should be noted that our results only indicate the *average* response to a fiscal consolidation shock. The experience of a particular country with a specific consolidation episode does not necessarily have to fit this average response. However, the results might still be used to obtain some rough estimate about the economic relevance of the contribution of a fiscal consolidation episode to the evolution of income inequality. We start with Italy’s fiscal consolidation from 1991 to 1998. The Gini increased from 29.4 to 34.0 over this time period, and by using the average response of income inequality to a long-lasting consolidation (see Figure 4), one can gauge that the consolidation accounts for about 28% of the increase in income inequality in the medium-term (in year seven). In contrast, our results on short adjustment episodes suggest that consolidations such as the one in Austria in 1996-1997 or the one in the Netherlands in 2004-2005 should not have had a medium-term impact on inequality that is different from zero. Similarly, the tax-based adjustment in Australia in 1994 should have had milder effects on income inequality than the spending-based adjustment in Denmark that started in 1983. Let’s turn to Finland next. From 1985 to 2000, the Gini of disposable in Finland income increased from 20.5 to 24.9 points. In 1992, the Finish government started a fiscal consolidation program, which was implemented in the aftermath of a systemic banking crisis (Valencia and Laeven, 2012). One of the extensions to our baseline results suggests that the average medium-term increase in inequality is more pronounced when an episode is started in conjunction with a financial crisis, with an increase of about 0.9 ppts. in year eight. Against this backdrop, the fiscal consolidation started in 1992 would explain about 23% of the increase in the Gini in year eight after the start of the consolidation episode in 1992.

The results presented in this paper come with limitations; further research on the distributional effects of fiscal austerity is needed. First, it should again be recognized that we estimated the average response of income inequality to a fiscal consolidation shock. The fact that many of the consolidations that started in the aftermath of the global financial-crisis are long in duration and large in size does not mean that they are guaranteed to have a strong medium-term impact on income inequality; other factors might play a role. One would have to study the episode from 2008 onwards in detail to allow for conclusions on the specific distributional effects. For such an analysis, however, one would have to use a different dataset (with more data points after the crisis) and to employ a different econometric method (e.g. Schneider *et al.*, 2016). However, as our results suggest that the medium-term impact is stronger than in the short-term, it may be seen as prudent to expect that it will take some years before the effects of consolidation measures on income inequality fully materialize. Second, the channels through which consolidation measures have an impact on income inequality could be analyzed in more depth. For example, Ball *et al.* (2013) and Furceri *et al.* (2016) have taken a look at how fiscal austerity impacts on the wage (and profit) share as well as on short-term and long-term unemployment – an analysis that could be extended further not only by additionally considering data for the more recent crisis years, but also by including relevant additional controls and by accounting for differences in size and composition of adjustment measures. Third, an important limitation of the papers in the existing literature certainly is that the fiscal consolidation data used

---

<sup>11</sup>Those four episodes consist of Finland (1992-1997), Ireland (2009-2013), Portugal (2010-2013) and Sweden (1993-1998).

do not allow to distinguish between different components of tax increases and spending cuts. However, the effects of retrenchment in transfer payments, different types of tax increases and cuts in public investment on the income distribution might differ. Finally, Rawdanowicz *et al.* (2013) have rightly pointed out that a comprehensive assessment of the distributional effects of fiscal adjustment programs would not only have to present estimates on the dynamic effects of fiscal adjustments on income inequality, which was the focus of this paper. To arrive at a more global and detailed assessment, one would also have to analyze the effects of austerity on the life-time income distribution, equality of opportunity and interactions with other policies. Until researchers will have figured out how to address these open points, however, the already existing literature on the distributional consequences of fiscal consolidation episodes – to which this paper has contributed – could still help policy-makers to make fiscal policy decisions in a world of high income inequality.

## 7 Conclusions

This paper has analyzed the dynamic effects of fiscal consolidation episodes on income inequality in the short- and medium-run by building on an annual data set covering 17 OECD countries over the time period 1978-2013. We have contributed to the relevant empirical literature by providing the first econometric analysis that includes 'narrative approach' data for the crisis years from 2010 onwards. Based on the methodology proposed by Jorda (2005), we derived impulse response functions from local projections, where the main finding is that fiscal consolidations typically lead to an increase in income inequality. According to our baseline results, the Gini coefficient of disposable income increases by about 0.4 percentage points in the short-run (in year three after the shock), and by 0.6 percentage points in the medium-run (in year seven) – which is largely consistent with the earlier literature (Ball *et al.*, 2013; Agnello and Sousa, 2014; Furceri *et al.*, 2016; Woo *et al.*, 2016). By providing several extensions to our baseline analysis, we are able to paint a more nuanced picture of the dynamic impact of fiscal austerity, as we find that the effects on income inequality are more pronounced a) when the size of the fiscal consolidation package is large rather than small; b) when the duration of the adjustment is long instead of short; c) when the fiscal consolidation is based more on spending cuts than on tax increases; d) when the consolidation is started in the aftermath of a financial crisis rather than in a non-crisis episode; and e) when the adjustment falls into a period of low economic growth instead of high growth. The findings that fiscal consolidation policies are an important determinant of income inequality could be taken into account by governments for which doing something about high income inequality is a priority.

## References

- ACEMOGLU, D. (2003). Cross-Country Inequality Trends. *The Economic Journal*, **113**, F121–F149.
- AFONSO, A. (2010). Expansionary Fiscal Consolidations in Europe: New Evidence. *Economics Letters*, **17** (2), 105–109.
- AGNELLO, L., FAZIO, G. and SOUSA, R. (2016). National fiscal consolidations and regional inequality in Europe. *Cambridge Journal of Regions, Economy and Society*, **9** (1), 59–80.
- and SOUSA, R. (2012). Fiscal adjustment and income inequality: a first assessment. *Applied Economics Letters*, **19** (16), 1627–1632.
- and — (2014). How Does Fiscal Consolidation Impact on Income Inequality. *The Review of Income and Wealth*, **60** (4), 702–726.

- ALESINA, A. and ARDAGNA, S. (2010). Large Changes in Fiscal Policy: Taxes versus Spending. In *Tax Policy and the Economy, Volume 24*, NBER Chapters, National Bureau of Economic Research, pp. 35–68.
- , BARBIERO, O., FAVERO, C., GIAVAZZI, F. and PARADISI, M. (2015a). Austerity in 2009–2013. *Economic Policy*, **30** (83), 385–437.
- , FAVERO, C. and GIAVAZZI, F. (2015b). The output effects of fiscal stabilization plans. *Journal of International Economics*, **96** (1), 19–42.
- ATKINSON, T. (2015). *Inequality. What Can Be Done?* Harvard University Press.
- and MORELLI, S. (2010). *Income Inequality and banking crises: a first look*. Report for the international labour foundation, ILO.
- BALL, L., FURCERI, D., LEIGH, D. and LOUNGANI, P. (2013). *The Distributional Effects of Fiscal Consolidation*. IMF Working Papers 13/151, International Monetary Fund.
- BARRELL, R., HOLLAND, D. and HURST, I. (2012). Fiscal multipliers and prospects for consolidation. *OECD Journal: Economic Studies*, **2012** (1), 71–102.
- BARRO, R. and LEE, J.-W. (2013). A New Data Set of Educational Attainment in the World. *Journal of Development Economics*, **104**, 184–198.
- BECK, N. and KATZ, J. (1995). What to do (and not to do) with time-series cross-section data. *The American Political Science Review*, **89** (3), 634–647.
- BLANCHARD, O. and LEIGH, D. (2014). Learning about Fiscal Multipliers from Growth Forecast Errors. *IMF Economic Review*, **62** (2), 179–212.
- BLINDER, A. and ZANDI, M. (2010). *How the Great Recession was brought to an end*. Paper published on July 27th 2010.
- BLYTH, M. (2013). *Austerity. The History of a Dangerous Idea*. Oxford University Press: New York.
- CAI, X. and DENHAAN, W. (2009). *Predicting Recoveries and the Importance of Using Enough Information*. Cepr discussion paper no. 7508.
- CARNOT, N. and DE CASTRO, F. (2015). *The discretionary fiscal effort: an assessment of fiscal policy and its output effect*. European Economy - Economic Papers 543, Directorate General Economic and Financial Affairs (DG ECFIN), European Commission.
- CHRISTIANO, L., EICHENBAUM, M. and REBELO, S. (2011). When Is the Government Spending Multiplier Large? *Journal of Political Economy*, **119** (1), 78 – 121.
- COTTARELLI, C., GERSON, P. and SENHADJI, A. (2014). *Post-crisis Fiscal Policy*. The MIT Press.
- COURNÈDE, B., GOUJARD, A., PINA, Á. M. and DE SERRES, A. (2013). *Choosing Fiscal Consolidation Instruments Compatible with Growth and Equity*. OECD Economic Policy Papers 7, OECD Publishing.
- DELLEPIANE-AVELLANEDA, S. (2015). The Political Power of Economic Ideas: The Case of 'Expansionary Fiscal Contractions'. *The British Journal of Politics and International Relations*, **17** (3), 391–418.

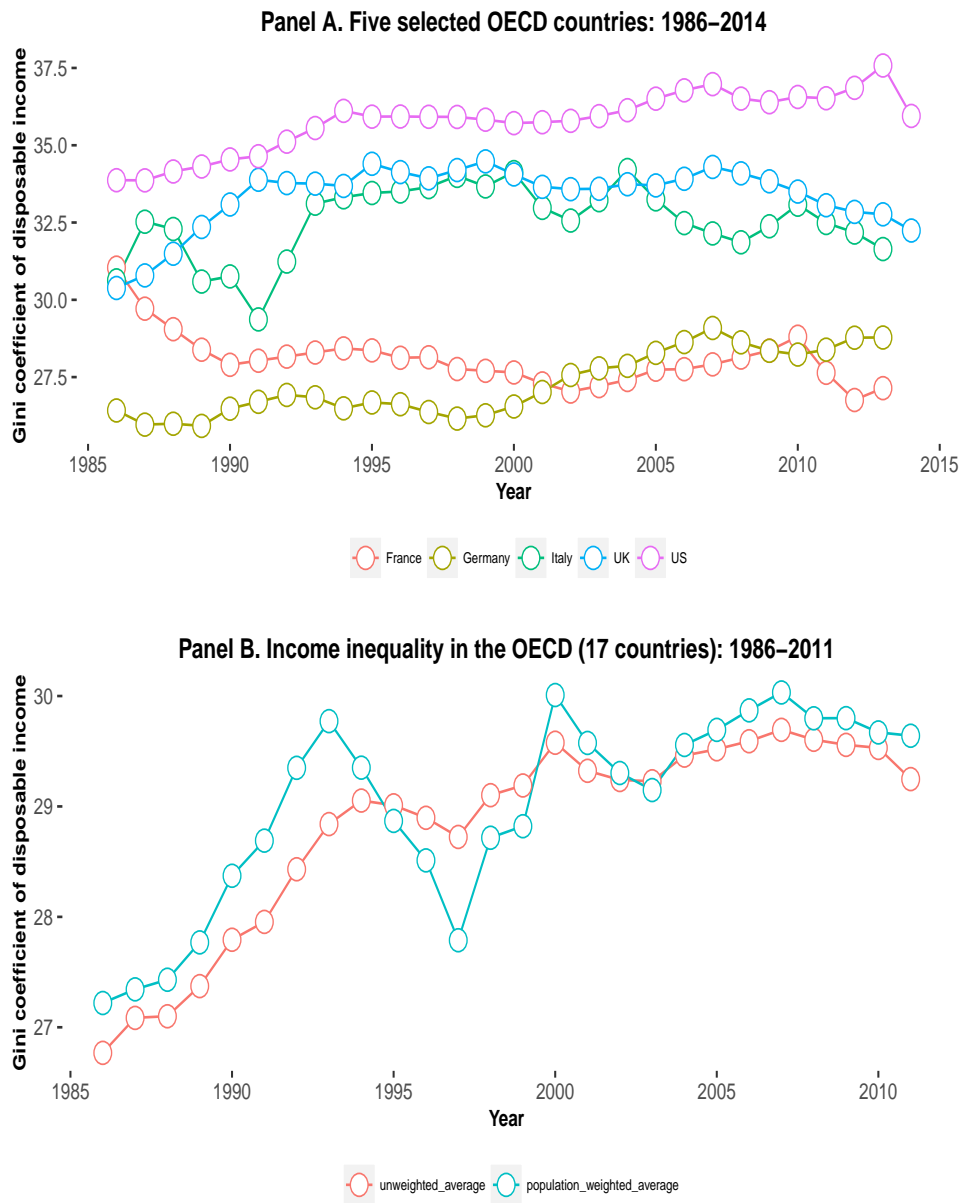


- DELONG, B. and SUMMERS, L. (2012). Fiscal Policy in a Depressed Economy. *Brookings Papers on Economic Activity*, **44** (1 (Spring)), 233–297.
- DEVRIES, P., GUAJARDO, J., LEIGH, D. and PESCATORI, A. (2011). *A New Action-Based Dataset of Fiscal Consolidation*. IMF Working Paper 11/128, International Monetary Fund.
- EGGERTSSON, G. B. and KRUGMAN, P. (2012). Debt, Deleveraging, and the Liquidity Trap: A Fisher-Minsky-Koo Approach. *The Quarterly Journal of Economics*, **127** (3), 1469–1513.
- FURCERI, D., JALLES, J. and LOUNGANI, P. (2016). Fiscal Consolidation And Inequality In Advanced Economies: How Robust Is the Link? *Banca d'Italia: Beyond the Austerity Dispute: New Priorities for Fiscal Policy*, **20** (March 2016), 13–32.
- GECHERT, S., HALLETT, A. and RANNENBERG, A. (2015). *Fiscal multipliers in downturns and the effects of Eurozone fiscal consolidation*. Center for Economic Policy Research Policy Insight 79, CEPR.
- and RANNENBERG, A. (2014). *Are Fiscal Multipliers Regime-Dependent? A Meta Regression Analysis*. IMK Working Paper 139-2014, IMK at the Hans Boeckler Foundation, Macroeconomic Policy Institute.
- GUAJARDO, J., LEIGH, D. and PESCATORI, A. (2014). Expansionary Austerity? International Evidence. *Journal of the European Economic Association*, **12** (4), 949–968.
- GUPTA, S., TALLES, J., MULLAS-GRANADOS, C. and SCHENA, M. (2017). *Governments and Promised Fiscal Consolidations: Do They Mean What They Say?* Imf working paper 17/39.
- HEIMBERGER, P. (2017). Did fiscal consolidation cause the double dip recession in the euro area? *Review of Keynesian Economics*, **5** (3), 439–458.
- HOLLAND, D. and PORTES, J. (2012). Self-defeating austerity? *National institute economic review*, **222**, F4–F10.
- ILZETZKI, E., MENDOZA, E. G. and VÉGH, C. A. (2013). How big (small?) are fiscal multipliers? *Journal of Monetary Economics*, **60** (2), 239–254.
- IN 'T VELD, J. (2013). *Fiscal consolidations and spillovers in the Euro area periphery and core*. European Economy - Economic Papers 506, Directorate General Economic and Financial Affairs (DG ECFIN), European Commission.
- INTERNATIONAL MONETARY FUND (2012). *Taking Stock. A Progress Report on Fiscal Adjustment*. Fiscal monitor october 2012, International Monetary Fund.
- INTERNATIONAL MONETARY FUND (2014). *Fiscal Policy and Income Inequality*. IMF Policy Paper January 23rd 2014, International Monetary Fund.
- JORDA, O. (2005). Estimation and Inference of Impulse Responses by Local Projections. *American Economic Review*, **95** (1), 161–182.
- and TAYLOR, A. (2016). The Time for Austerity: Estimating the Average Treatment Effect of Fiscal Policy. *The Economic Journal*, **126** (590), 219–255.
- KAPPELLER, J. and SCHÜTZ, B. (2014). Debt, boom, bust: a theory of Minsky-Veblen cycles. *Journal of Post Keynesian Economics*, **36** (4), 781–813.
- KAPLANOGLU, G., RAPANOS, V. and BARDAKAS, I. (2015). Does Fairness Matter for the Success of Fiscal Consolidation? *Kyklos*, **68** (2), 197–219.

- KHATIWADA, S. (2009). *Stimulus Packages to Counter Global Economic Crisis: A review*. International Institute for Labour Studies Discussion Paper 196/2009.
- KUMHOF, M., RANCIERE, R. and WINANT, P. (2015). Inequality, Leverage and Crises. *American Economic Review*, **105** (3), 1217–1245.
- LANE, P. R. (2012). The European Sovereign Debt Crisis. *Journal of Economic Perspectives*, **26** (3), 49–68.
- MARTINEZ-VAZQUEZ, J., VULOVIC, V. and MORENO-DODSON, B. (2012). The Impact of Tax and Expenditure Policies on Income Distribution: Evidence from a Large Panel of Countries. *Review of Public Economics*, **200** (4), 95–130.
- MILANOVIC, B. (2016a). All the Ginis (ALG) dataset. *Online dataset*, (Version October 2016).
- (2016b). *Global Inequality. A New Approach for the Age of Globalization*. Harvard University Press.
- MOURRE, G., ASTARITA, C. and PRINCEN, S. (2014). *Adjusting the budget balance for the business cycle: the EU methodology*. European Economy - Economic Papers 536, Directorate General Economic and Financial Affairs (DG ECFIN), European Commission.
- MULAS-GRANADOS, C. (2005). Fiscal Adjustments and the Short-Term Trade-Off between economic growth and equality. *Review of Public Economics*, **172** (1), 61–92.
- NICKELL, S. (1981). Biases in Dynamic Models with Fixed Effects. *Econometrica*, **49** (6), 1417–1426.
- OECD (2015). *Structural Reforms in Europe. Achievements and Homework*. Better Policies Series April 2015, Organisation for Economic Co-operation and Development.
- PEROTTI, R. (2013). The "austerity myth". gain without pain? In *Fiscal Policy after the Financial Crisis*, NBER Chapters, National Bureau of Economic Research, pp. 307–354.
- PIKETTY, T. (2014). *Capital in the 21st Century*. Harvard University Press.
- QAZIZADA, W. and STOCKHAMMER, E. (2015). Government spending multipliers in contraction and expansion. *International Review of Applied Economics*, **29** (2), 238–258.
- RAMEY, V. A. (2011). Can Government Purchases Stimulate the Economy? *Journal of Economic Literature*, **49** (3), 673–85.
- RAWDANOWICZ, L., WURZEL, E. and CHRISTENSEN, A. K. (2013). *The Equity Implications of Fiscal Consolidation*. OECD Economics Department Working Papers 1013, OECD Publishing.
- REINHART, C. and ROGOFF, K. (2011). From Financial Crisis To Debt Crisis. *American Economic Review*, **101** (5), 1676–1706.
- ROMER, C. D. and ROMER, D. H. (2010). The Macroeconomic Effects of Tax Changes: Estimates Based on a New Measure of Fiscal Shocks. *American Economic Review*, **100** (3), 763–801.
- ROSER, M. and CRESPO-CUARESMA, J. (2016). Why Is Inequality Increasing in the Developed World? *Review of Income and Wealth*, **62** (1), 1–27.
- SCHALTEGGER, C. A. and WEDER, M. (2014). Austerity, inequality and politics. *European Journal of Political Economy*, **35** (C), 1–22.

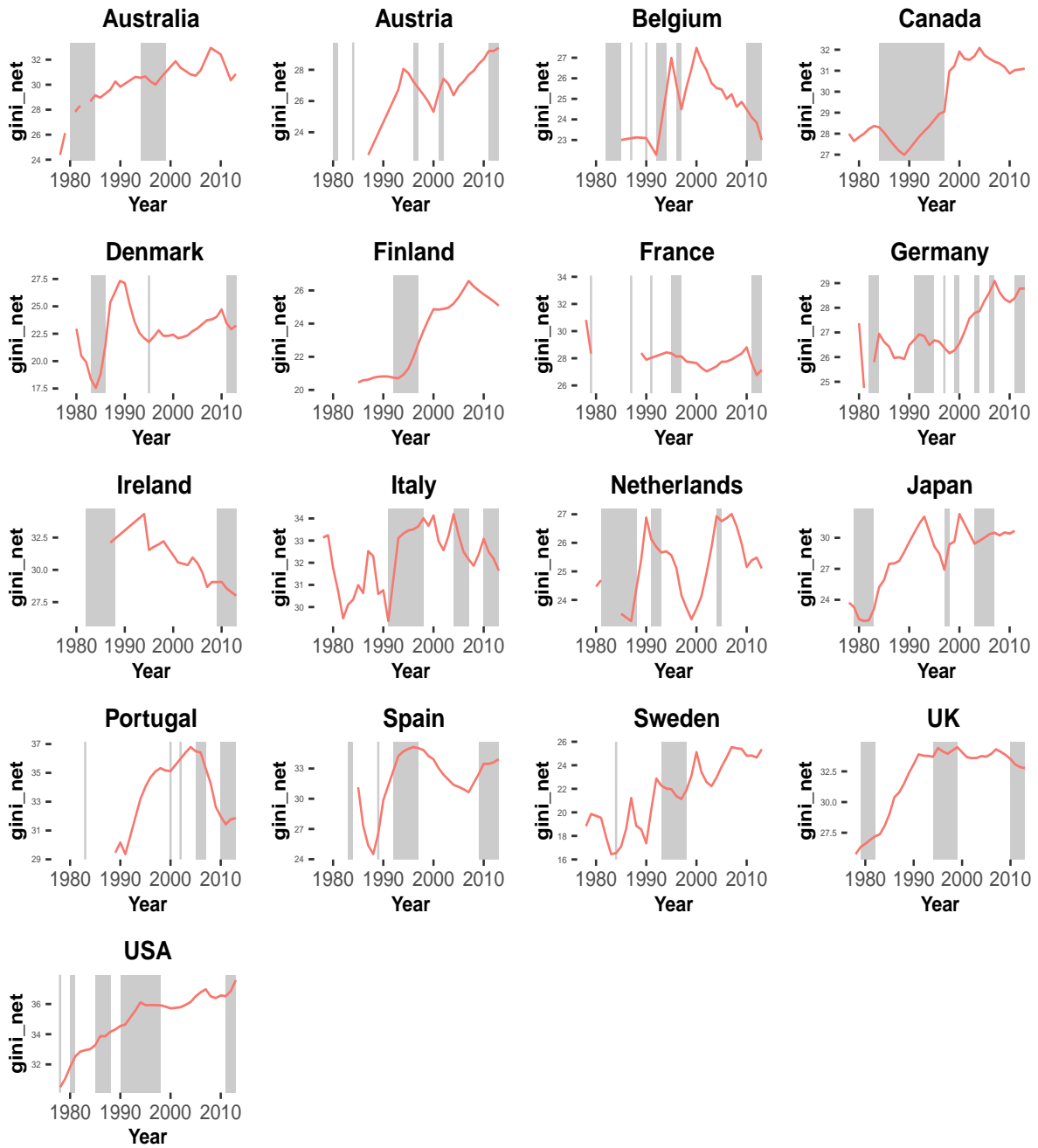
- SCHNEIDER, M., KINSELLA, S. and GODIN, A. (2016). Redistribution in the age of austerity: Evidence from europe 2006-2013. *Applied Economics Letters*, **Online Submission First**, 1–5.
- SOLT, F. (2016). The Standardized World Income Inequality Database. *Social Science Quarterly*, **97** (5), 1267–1281.
- STOCKHAMMER, E. (2015). Rising Inequality as a cause of the present crisis. *Cambridge Journal of Economics*, **39** (3), 935–958.
- TEULINGS, C. and ZUBANOV, N. (2010). *Economic Recovery a Myth? Robust Estimation of Impulse Responses*. CEPR Discussion Paper 7300.
- VALENCIA, F. and LAEVEN, L. (2012). *Systemic Banking Crises Database: An Update*. IMF Working Papers 12/163, International Monetary Fund.
- WILKINSON, R. and PICKETT, K. (2009). *The Spirit Level. Why More Equal Societies Almost Always Do Better*. Allen Lane.
- WILSON, D. J. (2012). Fiscal Spending Jobs Multipliers: Evidence from the 2009 American Recovery and Reinvestment Act. *American Economic Journal: Economic Policy*, **4** (3), 251–82.
- WOO, J., BOVA, E., KINDA, T. and ZHANG, S. (2016). Distributional Consequences of Fiscal Adjustments: What Do the Data Say? *IMF Economic Review*, **forthcoming**.
- WOODFORD, M. (2011). Simple Analytics of the Government Expenditure Multiplier. *American Economic Journal: Macroeconomics*, **3** (1), 1–35.
- YANG, W., FIDRMUC, J. and GHOSH, S. (2015). Macroeconomic effects of fiscal adjustment: A tale of two approaches. *Journal of International Money and Finance*, **57**, 31–60.

Figure 1: The evolution of income inequality in the OECD since the mid-1980s



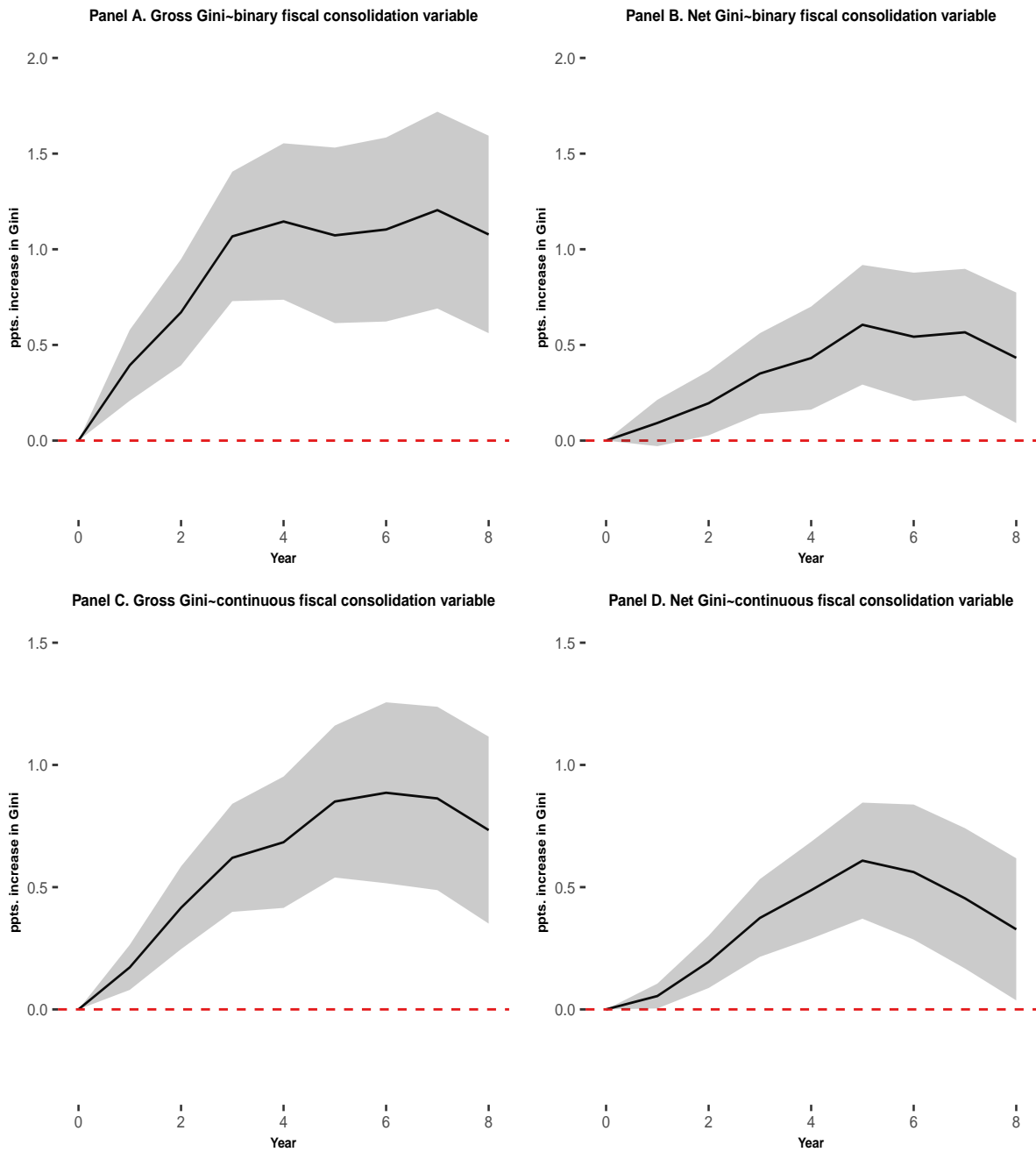
*Notes.* Data: SWIID (Solt, 2016); own calculations. Panel B shows an unweighted average of 17 OECD countries (Australia, Austria, Belgium, Canada, Denmark, Finland, France, Germany, Ireland, Italy, Japan, Netherlands, Portugal, Spain, Sweden, the United Kingdom, and the United States of America), which we will also include in the data set for the empirical analysis in the remainder of this paper.

Figure 2: The evolution of the Gini index of disposable income in 17 OECD countries



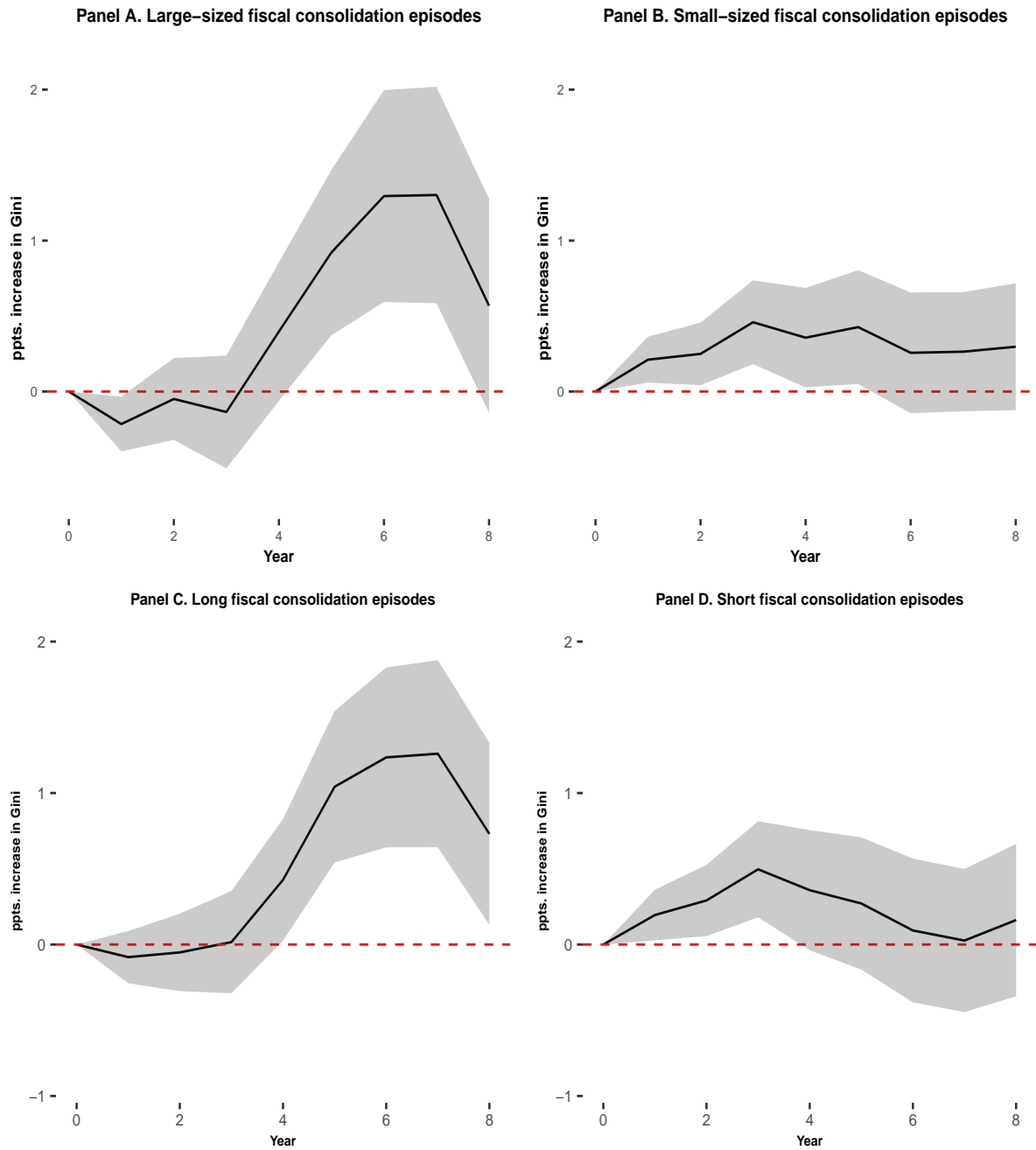
Notes. Grey bars indicate fiscal consolidation episodes. For details, see Table 2.

Figure 3: Baseline results: Impulse response functions



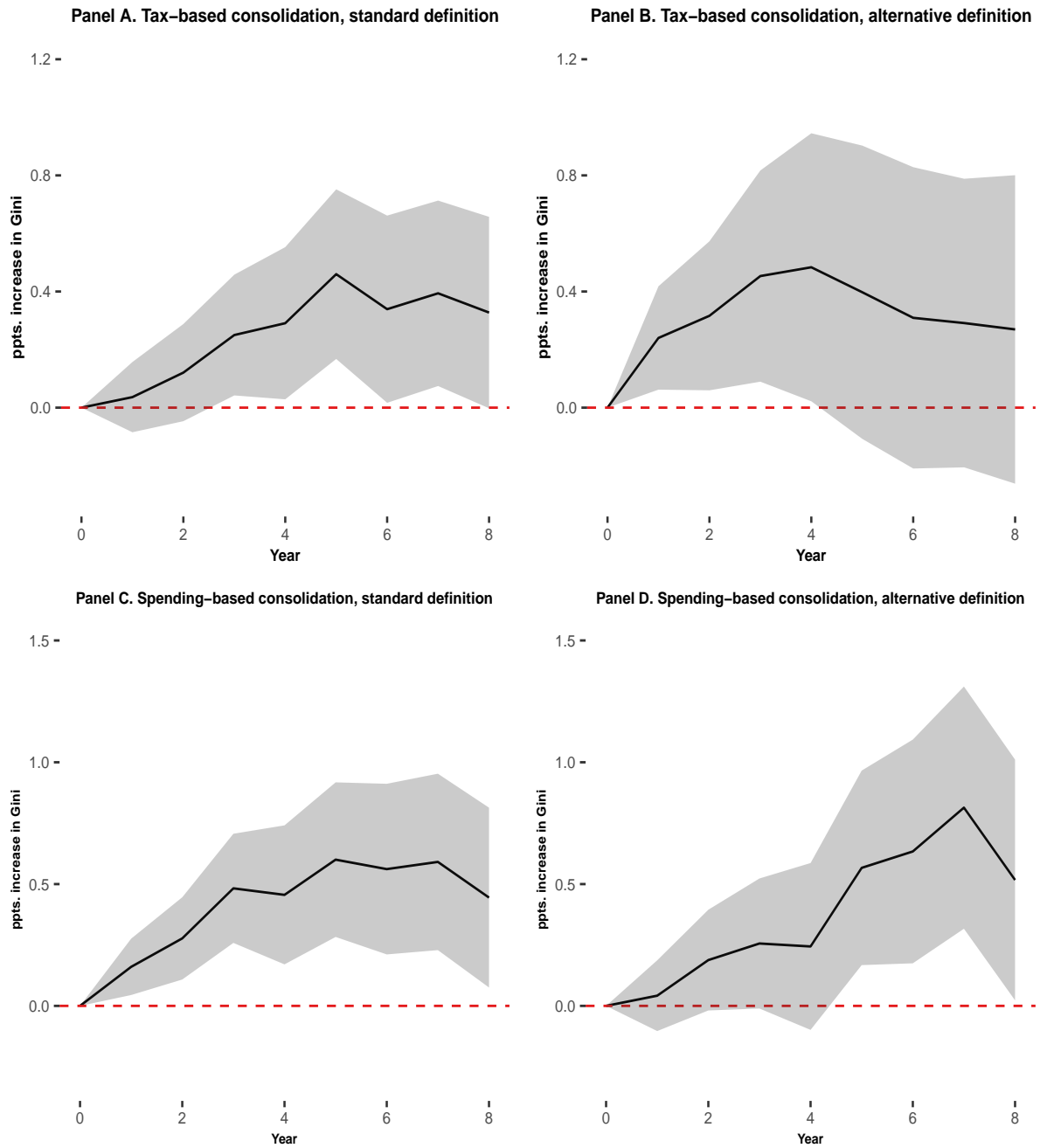
*Notes.* Grey areas represent one standard error bands around the coefficients. Additional controls: two lags of change in Gini, GDP growth, change in unemployment rate, change in trade openness, change in years of schooling, TFP growth, country fixed effects, time fixed effects. One standard error bands in grey.

Figure 4: Do size and duration of consolidation episodes matter?



*Notes.* Grey areas represent one standard error bands around the coefficients. Additional controls: two lags of change in Gini, GDP growth, change in unemployment rate, change in trade openness, change in years of schooling, TFP growth, country fixed effects, time fixed effects. See the text for an explanation on how the standard and alternative definitions of adjustment episodes are to be distinguished. One standard error bands in grey.

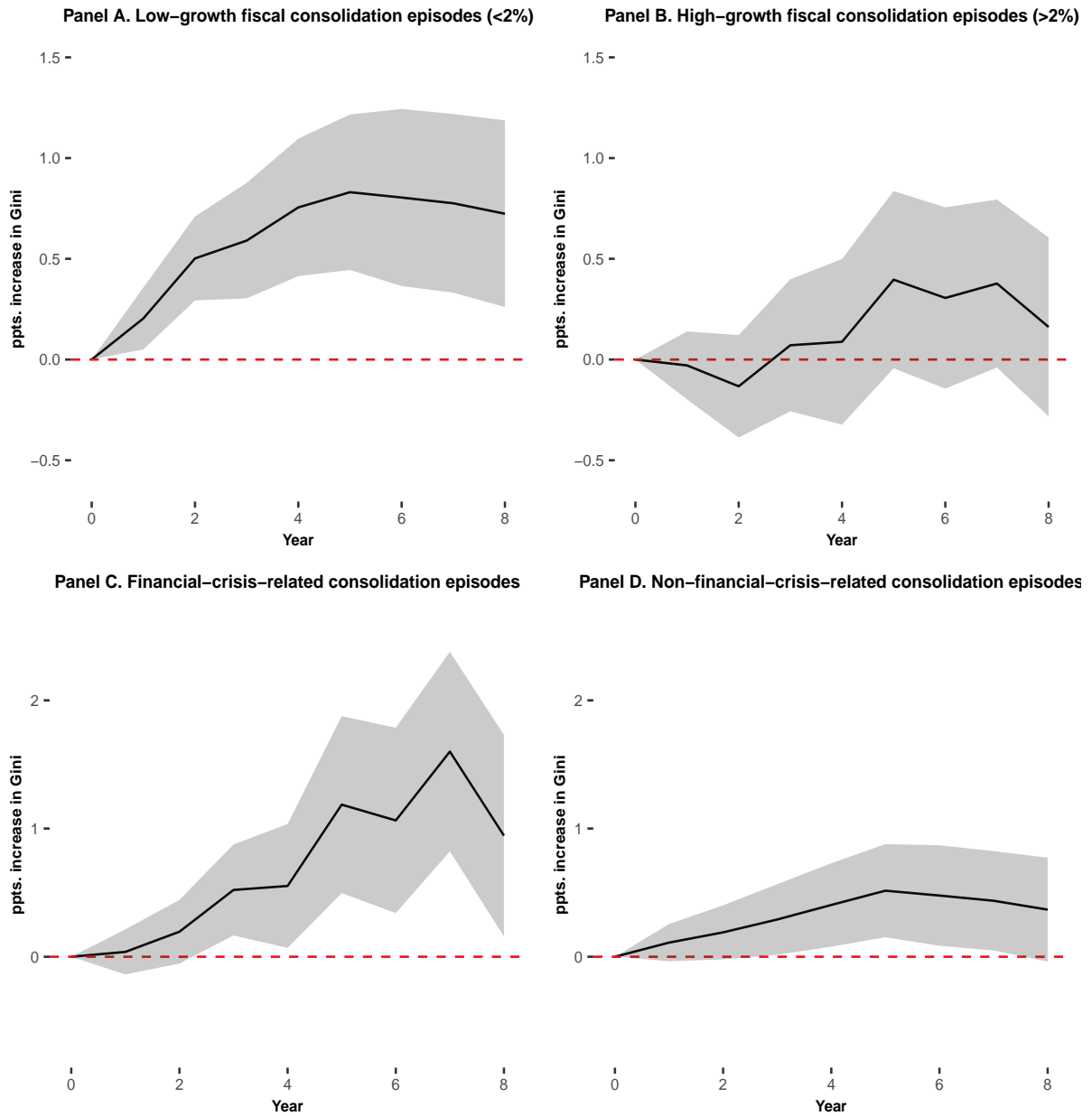
Figure 5: Does the composition of consolidation episodes matter?



*Notes.* Grey areas represent one standard error bands around the coefficients. Additional controls: two lags of change in Gini, GDP growth, change in unemployment rate, change in trade openness, change in years of schooling, TFP growth, country fixed effects, time fixed effects. See the text for an explanation on how the standard and alternative definitions of adjustment episodes are to be distinguished. One standard error bands in grey.

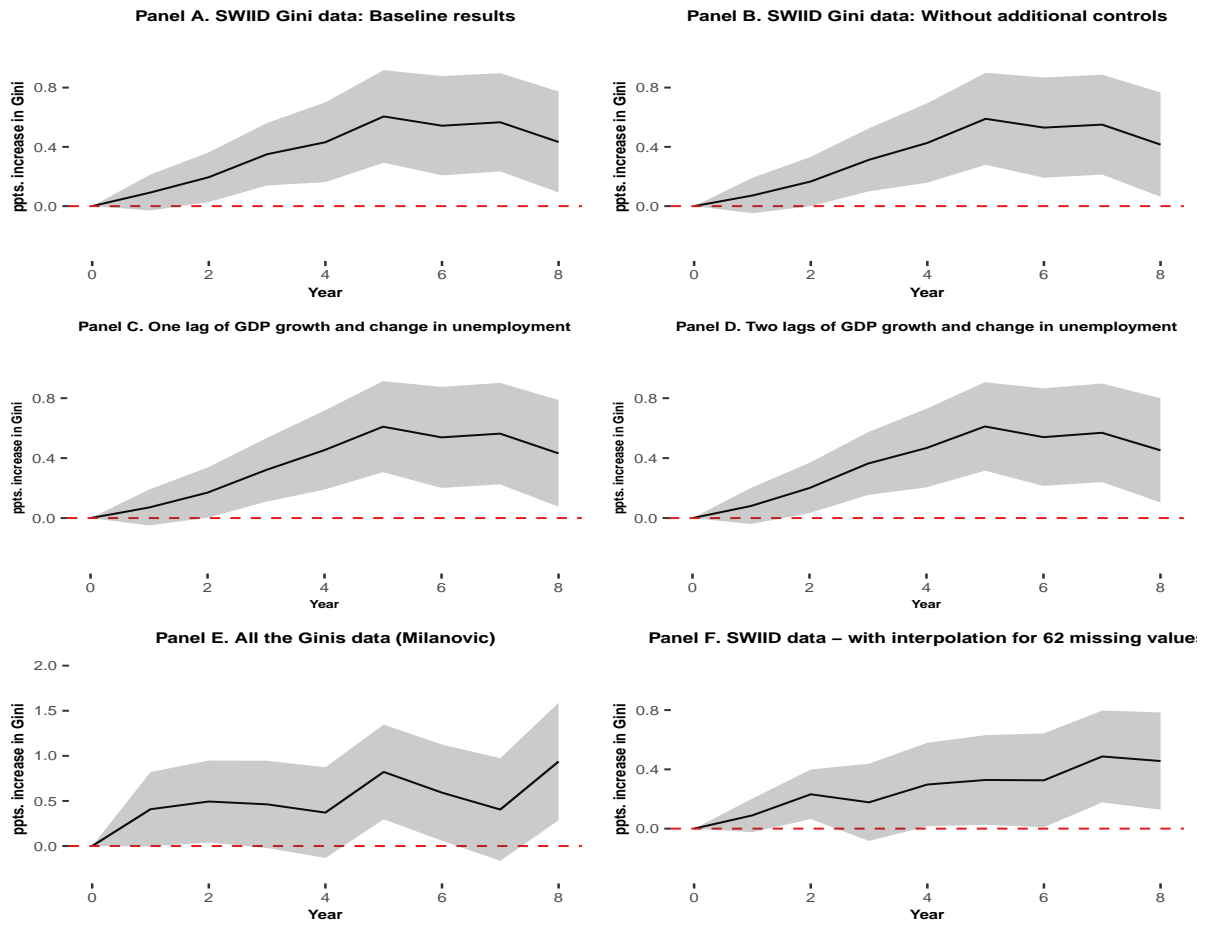


Figure 6: Does the timing of the business cycle matter?



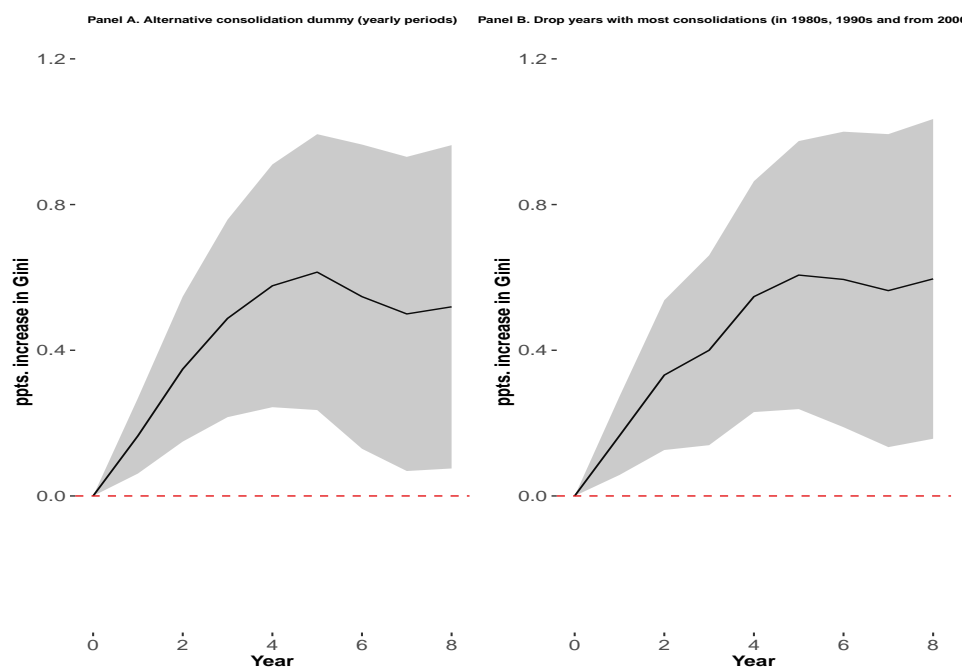
*Notes.* Grey areas represent one standard error bands around the coefficients. Additional controls: two lags of change in Gini, GDP growth, change in unemployment rate, change in trade openness, change in years of schooling, TFP growth, country fixed effects, time fixed effects. One standard error bands in grey.

Figure 7: Robustness checks: Variations in Gini data



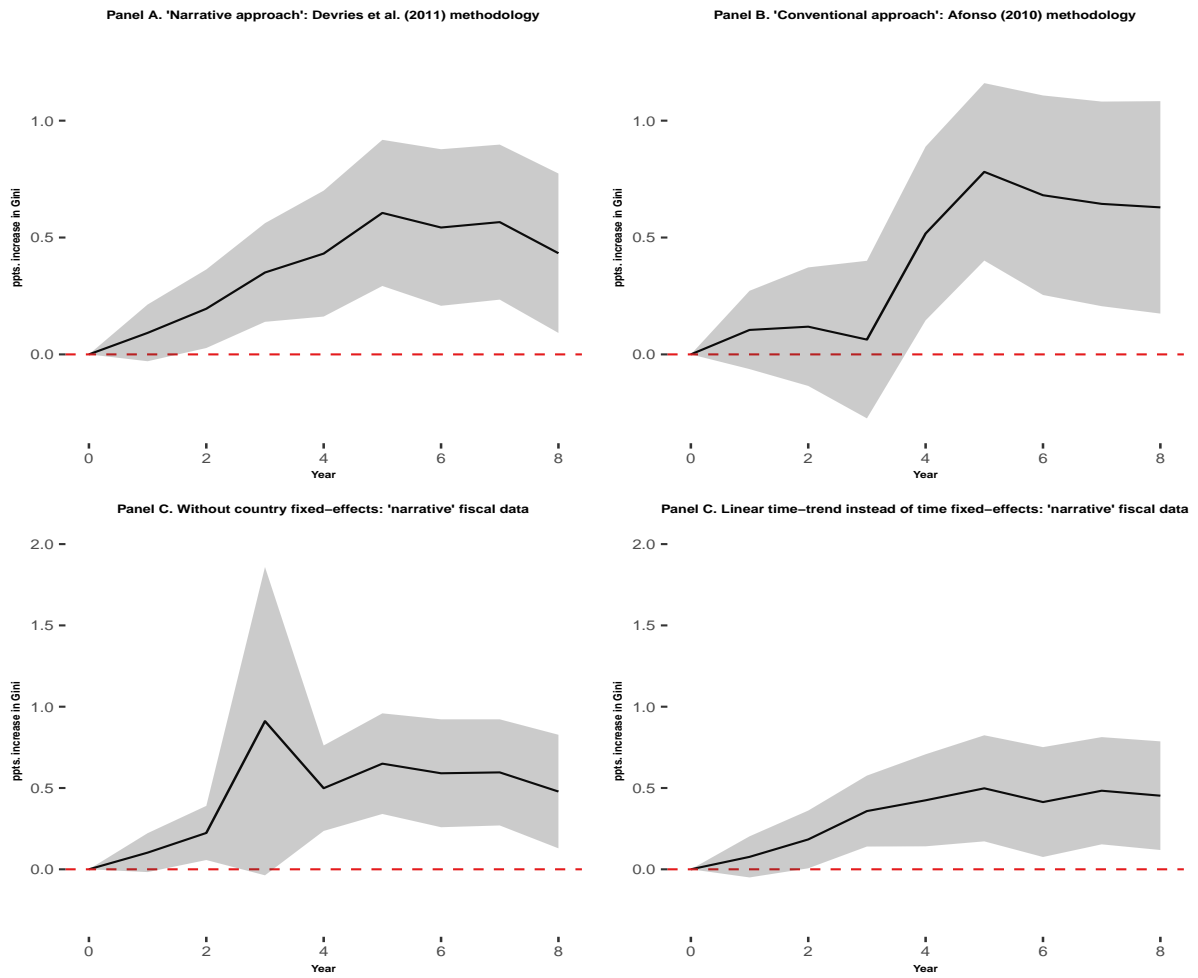
*Notes.* Grey areas represent one standard error bands around the coefficients. Additional controls: two lags of change in Gini, GDP growth, change in unemployment rate, change in trade openness, change in years of schooling, TFP growth, country fixed effects, time fixed effects. One standard error bands in grey.

Figure 8: Robustness checks: Alternative fiscal consolidation dummy and timing of fiscal consolidations



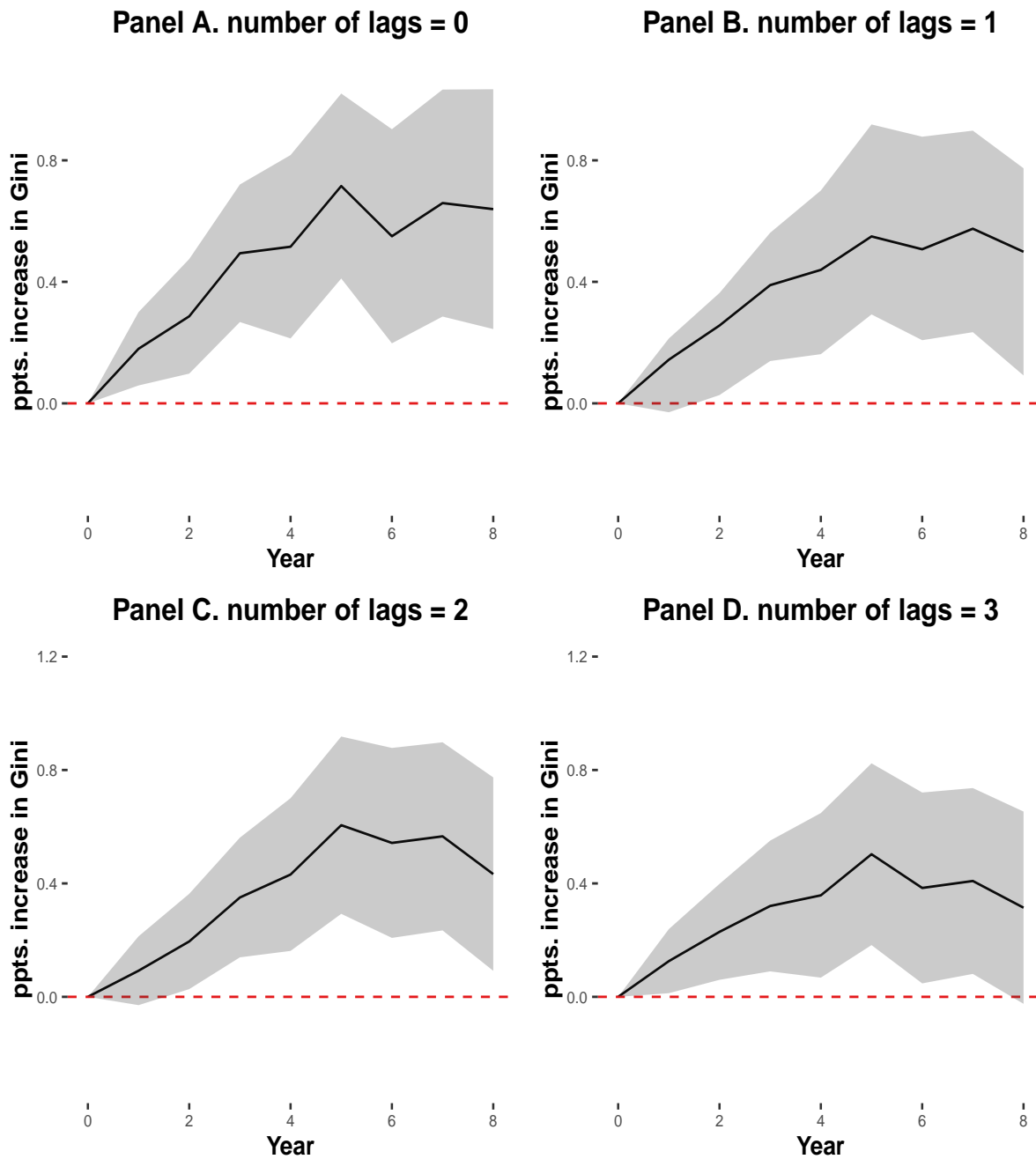
*Notes.* Grey areas represent one standard error bands around the coefficients. Additional controls: two lags of change in Gini, GDP growth, change in unemployment rate, change in trade openness, change in years of schooling, TFP growth, country fixed effects, time fixed effects. One standard error bands in grey.

Figure 9: Robustness checks: Vary fiscal consolidation variable, time FE and country FE



*Notes.* Grey areas represent one standard error bands around the coefficients. Additional controls: two lags of change in Gini, GDP growth, change in unemployment rate, change in trade openness, change in years of schooling, TFP growth. Panel C excludes time fixed effects. Panel D excludes country fixed effects. Otherwise, all estimations include country fixed effects and time fixed effects. One standard error bands in grey.

Figure 10: Robustness checks: Vary the number of lags of the change in the Gini coefficient



*Notes.* Grey areas represent one standard error bands around the coefficients. Additional controls: GDP growth, change in unemployment rate, change in trade openness, change in years of schooling, TFP growth, country fixed effects, time fixed effects. One standard error bands in grey.

Table 1: Summary of relevant econometric papers on the link between fiscal consolidations and income inequality

<i>No.</i>	<b>Authors</b>	<b>Gini income data</b>	<b>Fiscal consolidation data</b>	<b>Country group, time period</b>	<b>Econometric method</b>
1	Mulas-Granados (2005)	WIID	Change in CAPB	15 EU countries, 1960-2000	MA, PA
2	Agnello and Sousa (2012)	SWIID	Change in CAPB	18 OECD countries, 1970-2010	SUR
3	Ball <i>et al.</i> (2013)	SWIID	DeVries <i>et al.</i> (2011)	17 OECD countries, 1978-2009	IRFs from LPs
4	Agnello and Sousa (2014)	SWIID	DeVries <i>et al.</i> (2011)	18 OECD countries, 1978-2009	SUR
5	Schaltegger and Weder (2014)	SWIID	DeVries <i>et al.</i> (2011)	17 OECD countries, 1978-2009	FEE
6	Agnello <i>et al.</i> (2016)	ERD	DeVries <i>et al.</i> (2011)	13 European countries, 1980-2008	FEE
7	Furceri <i>et al.</i> (2016)	SWIID	DeVries <i>et al.</i> (2011)	17 OECD countries, 1978-2009	IRFs from LPs
8	Schneider <i>et al.</i> (2016)	Gini-like index	Change in CAPB	12 European countries, 2006-2013	FEE
9	Woo <i>et al.</i> (2016)	SWIID	DeVries <i>et al.</i> (2011)	17 OECD countries, 1978-2009	FEE, SUR

*Notes.* CAPB stands for Cyclically-Adjusted Primary Balance; ERD for European Regional Database; FEE for Fixed Effects Estimator; "IRFs from LPs" for "Impulse Response Functions from Local Projections" (Jorda, 2005); "MA, PA" for Means Analysis and Parametric Analysis; SUR for Seemingly Unrelated Regression; SWIID for the Standardized World Income Inequality Database (Solt, 2016); WIID for World Income Inequality Database.

Table 2: Fiscal consolidation episodes, based on DeVries *et al.* (2011) and Alesina *et al.* (2015a)

<b>Country</b>	<b>Fiscal consolidation episodes</b>
<i>Australia</i>	1985-1988, 1994-1999
<i>Austria</i>	1980-1981, 1984, 1996-1997, 2001-2002, 2011-2013
<i>Belgium</i>	1982-1985, 1987, 1990, 1992-1994, 1996-1997, 2010-2013
<i>Canada</i>	1984-1997
<i>Denmark</i>	1983-1986, 1995, 2011-2013
<i>Finland</i>	1992-1997
<i>France</i>	1979, 1987, 1991, 1995-1997, 2011-2013
<i>Germany</i>	1982-1984, 1991-1995, 1997, 1999-2000, 2003-2004, 2006-2007, 2011-2013
<i>Ireland</i>	1982-1988, 2009-2013
<i>Italy</i>	1991-1998, 2004-2007, 2010-2013
<i>Japan</i>	1979-1983, 1997-1998, 2003-2007
<i>Netherlands</i>	1981-1988, 1991-1993, 2004-2005
<i>Portugal</i>	1983, 2000, 2002, 2005-2007, 2010-2013
<i>Spain</i>	1983-1984, 1989, 1992-1997, 2009-2013
<i>Sweden</i>	1984, 1993-1998
<i>United Kingdom</i>	1979-1982, 1994-1999, 2010-2013
<i>USA</i>	1978, 1980-1981, 1985-1988, 1990-1998, 2011-2013