

Hans **Böckler**
Stiftung 

Fakten für eine faire Arbeitswelt.

The German Economy and Labour Market: Facts and Figures

Key Data 2010

Germany

Key Data

Federal Republic of Germany

including EU in comparison and Federal States
in comparison

This printable version contains current information concerning economic and labour market policy of the Federal Republic of Germany, its western and eastern federal territory.

Contents

Population/
Employment

Population
Employees
Employees by economic sector
Employees aged...
Civil servants
Self-employed
Activity rate
Employees subject to social security contributions
Atypical employment
Part-time employees
Marginal employees
One-Euro Jobs

Income

Gross income
Wage share
Gross monthly earnings
Average annual pension

Labour market/
Social security

Unemployed
Hidden labour force
Unemployment rate
Short-time workers
Job-creation measures
Professional training
Relief on unemployment rate through labour market policy measures
Recipients of Unemployment Benefit I + II
Social benefits
Flat-rate benefit Social Code II
Social Code II take-up rate
Social security contributions

Working hours	Annual volume of work Annual hours of work Weekly hours of work Vacation days Overtime Hours worked Share of employees with standard weekly hours Working nights, weekends, and public holidays, and shift work Fixed-term employment
Trade Union information	Trade Union members Adherence to collective agreements Companies with works-/staff council Co-determination companies Increase of standard wage Strikes
Economy/Finance	Gross Domestic Product Distribution of domestic product Government spending ratio Insolvency Hourly labour productivity Cost of living Total public budget Debt
Apprenticeship (market/situation)	Apprentices Yet unplaced applicants Apprenticeship training positions Supply-demand ratio
Environment/Health	Total primary energy consumption Energy expenditure Public transport Average life expectancy Occupational illnesses Occupational accidents
Federal States in comparison	Unemployment rate Social Code II take-up rate Gross Domestic Product
EU in comparison	Union density Rate of poverty risk Employment rate Unemployment rate Gross Domestic Product

Population/Employment

	East 2009	change on prev. year	West 2009	change on prev. year	FRG change on prev. year
Population ¹ (31.12.)	16,380,249	-0.5%	65,422,008	-0.2%	-0.2%
Female	8,327,859	-0.5%	33,370,792	-0.2%	-0.3%

	East 2009	change on prev. year	West 2009	change on prev. year	FRG change on prev. year
Employees (MC)	7,649,000	0.2%	31,013,000	-0.3%	-0.2%
Women	3,592,000	1.1%	14,099,000	0.8%	0.8%
by economic sector ²					
Agriculture and forestry	144,000	-26.2%	504,000	-25.6%	-25.7%
Manufacturing	1,973,000	-3.5%	9,110,000	-3.6%	-3.6%
Services ³	5,533,000	2.6%	21,399,000	2.0%	2.1%

Employees (MC) aged ...	East 2009	2008	West 2009	2008	FRG 2009
under 25 years	12.6%	13.3%	12.5%	12.8%	12.5%
25 - 45 years	45.0%	45.5%	47.2%	48.3%	46.8%
45 years and older	42.5%	41.2%	40.3%	38.9%	40.7%

	East 2009	change on prev. year	West 2009	change on prev. year	FRG change on prev. year
Civil servants (MC)	334,000	-1.3%	1,755,000	-0.9%	-1.0%
Women	124,000	-6.0%	710,000	2.0%	0.7%
Self-employed ⁴ (MC)	884,000	0.7%	3,636,000	0.6%	0.6%
Women	298,000	-2.0%	1,195,000	-4.0%	-3.6%

Activity rate⁵ (MC)

West 2009  
East 2009  



	East 2009	change on prev. year	West 2009	change on prev. year	FRG change on prev. year
Employees subject to social security con- tributions (30.6.) Total	5,216,459	0.0%	22,163,637	-0.3%	-0.3%
Women	2,611,717	1.1%	9,939,106	1.3%	1.3%
Atypical employment	2,037,214	2.1%	10,886,392	0.9%	1.1%
Women	1,387,010	3.1%	7,715,411	2.0%	2.2%
Part-time employees	1,012,272	5.0%	4,189,487	3.7%	4.0%
Women	820,724	4.7%	3,518,619	3.6%	3.8%
Temporary agency workers	112,449	-19.3%	417,650	-25.5%	-24.3%
Women	33,270	-8.9%	131,109	-18.1%	-16.4%
Marginal employees	912,493	2.3%	6,279,255	1.5%	1.6%
Women	533,016	1.6%	4,065,683	1.4%	1.4%
One-Euro-Jobs ⁶	155,360	1.2%	174,109	3.7%	2.5%
Women	68,873	-1.5%	65,440	1.3%	-0.1%

Income

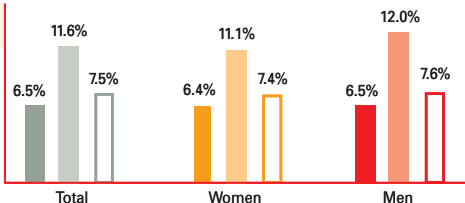
Gross income (in billion €)	FRG 2009	% change on 2008	% change on 2007	% change on 2006	% change on 2005
Employee remuneration	1,223.3	-0.1%	3.6%	6.5%	8.3%
Company- and invest- ment income	583.2	-11.8%	-11.6%	-7.3%	3.3%
Wage share ⁷	68.4 %	2.7PP	3.4PP	3.0PP	1.2PP
Gross annual earnings ⁸ (€)	East 2009	change on prev. year	West 2009	change on prev. year	FRG change on prev. year
Women's earnings	31,089	8.9%	36,465	3.3%	3.9%
Men's earnings	32,305	4.2%	45,746	-1.6%	-1.1%
Women/Men in %	96.2	4.1PP	79.7	3.8PP	3.9PP
Average monthly pension ⁹ (€) - West ¹⁰	2009	2008	2007	2006	2005
Current recipients	714	698	693	693	703
New pension entrants	642	645	644	610	608
Average monthly pension ⁹ (€) - East ¹¹					
Current recipients	834	811	805	805	809
New pension entrants	725	736	738	755	755

Labour Market¹/Social Security

Split labour market (June)	FRG 2010	% change on 2009	% change on 2008	% change on 2007	% change on 2006
Unemployed	3,153,300	-7.5%	-0.2%	-14.5%	-28.3%
Women	1,453,498	-5.9%	-7.1%	-21.3%	-31.5%
Unemployed (June)	East 2009	change on prev. year	West 2009	change on prev. year	FRG change on prev. year
Women	977,660	-10.4%	2,175,640	-6.2%	-7.5%
Non-German nationals	446,877	-10.1%	1,006,621	-4.0%	-5.9%
part-time employment ¹²	71,283	-3.1%	422,453	-6.9%	-6.4%
Women	55,625	0.9%	328,904	1.9%	1.8%
Under 20 years	46,179	-1.4%	299,307	0.3%	0.0%
Under 25 years	12,389	-20.7%	35,782	-14.4%	-16.1%
55 years and older	93,277	-18.6%	204,949	-17.1%	-17.5%
Unemployed for 12 months and longer	173,783	-1.2%	352,131	9.1%	5.5%
"Hidden labour force" (IAB)	308,337	-3.0%	647,810	5.5%	2.6%
	272,000	-23.4%	738,000	-11.8%	-15.3%

Labour Market/Social Security

Unemployment rate¹³ (June 2010)



Short-time workers (June, 2010 May)	East	change on prev. year	West	change on prev. year	FRG	change on prev. year
	2010		2010		2010	
	79,079	-54.8%	407,342	-67.3%		-65.7%

Participants in job-creation

measures (June)	East	change on prev. year	West	change on prev. year	FRG	change on prev. year
Participants in professional training (upskilling and reskilling, June)	60,637	-1.3%	129,752	-12.5%		-9.2%

Relief on unemployment rate through labourmarket policy

measures	East	change on prev. year	West	change on prev. year	FRG	change on prev. year
	503,582	-9.7%	1,075,478	-8.1%		-8.6%

Recipients of Unemployment

Benefit I	243,008	-18.0%	740,691	-15.3%		-16.0%
Female recipients	107,534	-10.2%	323,479	-7.6%		-8.2%
Unemployment Benefit II	1,613,198	-5.0%	3,214,299	-0.6%		-2.1%
Female recipients	789,463	-2.6%	1,657,240	2.4%		0.7%
Social benefits	500,765	0.5%	1,281,852	2.6%		2.0%
Female recipients	243,980	0.7%	624,985	2.7%		2.1%
Persons under 15 years of age	479,431	0.5%	1,221,012	2.6%		2.0%

Flat-rate benefit SC II¹⁴ (€, 1.7.2008)

	359	0.0%	359	0.0%		0.0%
--	-----	------	-----	------	--	------

Social Code II take-up rate (June)

Total ¹⁵	East	change on prev. year	West	change on prev. year	FRG	change on prev. year
	9.8%	-0.1PP	4.9%	0.2PP		5.9%
Women	9.5%	-0.2PP	5.0%	0.1PP		5.9%
Men	10.2%	-0.1PP	4.9%	0.2PP		5.9%
Women (welfare benef.) Under 15 Years	2.9%	-0.0PP	1.9%	0.1PP		2.1%
(welfare benefits) ¹⁶	26.0%	-0.3PP	13.3%	0.5PP		15.4%

Social insurance con- tributions (1.4.2007)

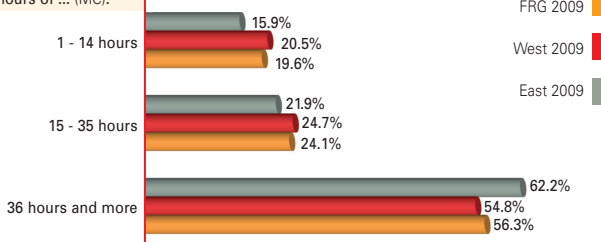
Health insurance ¹⁷	employee	change on prev. year	employer	change on prev. year
	7.650%	-0.5PP	6.700%	-0.6PP
Nursing insurance ¹⁷	0.975%	-0.3PP	0.975%	0.0PP
Pension insurance ¹⁷	9.950%	0.0PP	9.950%	0.0PP
Unemployment insur.	1.500%	0.1PP	1.500%	0.1PP
Total	20.075%	-0.7PP	19.125%	-0.5PP

Working Hours

	East 2009	change on prev. year	West 2009	change on prev. year	FRG change on prev. year
Annual volume of work (in million hours)	10,682	-2.0%	45,303	-2.7%	-2.5%
Annual hours of work (in hours, tariff)	1,728	0.0%	1,669	-0.6%	-0.5%
Weekly hours of work (full-time, average tariff, in hours)	39.0	-0.5%	37.9	-0.5%	-0.5%
Vacation days (official tariff)	29.5	-0.5%	29.7	-0.5%	-0.5%
Overtime ¹⁸ (hours per capita)	21.7	-20.5%	32.2	-20.6%	-20.6%

Share of employees with

weekly working
hours of ... (MC):



Share of employees with collectively agreed weekly working hours

of ... (31.12.06)	up to 35 hours	36- 37 hours	37.5- 38.5 hours	39 hours and more
West	25.1%	9.4%	36.7%	28.4%
East	5.9%	5.4%	31.2%	57.0%

Share of employees with

permanent
or regular (MC) ...

	East 2009	2008	West 2009	2008	FRG 2009
Rotating shift work	27.6%	27.0%	24.5%	24.5%	25.2%
Night work	16.0%	16.7%	14.9%	15.5%	15.1%
Sunday and/or public holiday work	35.6%	35.8%	39.4%	39.2%	38.5%
	20.8%	20.6%	21.3%	20.9%	21.2%

Fixed-term employment¹⁹ (MC)

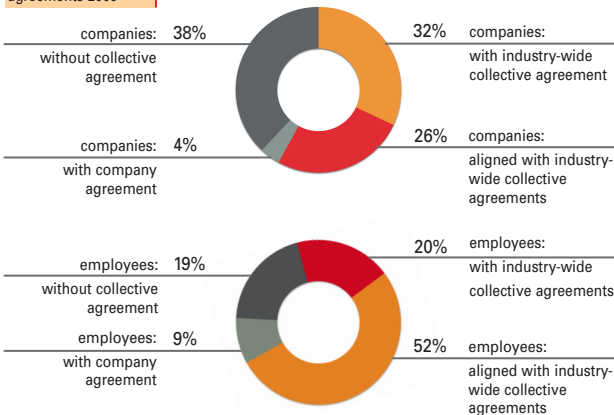
	2009	2008	2009	2008	2009
Total	12.8%	12.9%	8.6%	8.9%	9.4%
Women	12.4%	12.4%	8.9%	8.8%	9.6%
Men	13.2%	13.3%	8.3%	8.9%	9.2%

Trade Union Information

	FRG 2009	% change on 2008	% change on 2007	% change on 2006	% change on 2005
Trade union members-DGB	6,264,923	-1.7%	-2.7%	-4.9%	-7.6%
Women	2,027,002	-0.6%	-1.3%	-3.5%	-6.1%

Membership in employee organisations 2008	DGB	DBB	CGB	Total
	6,264,923	1,282,620	283,236	7,830,779
Women	32.4%	31.0%	24.2%	31.8%

Adherence to collective agreements 2009



Companies/employees with works council/staff council	FRG 2009	2008	2007	2006	2005
Companies	13.0%	12.8%	13.2%	12.9%	13.8%
Employees	50.5%	50.6%	50.8%	51.1%	52.2%

Companies covered by co-determination ²⁰ (Regulation of 1976, 31.12.)	682	694	708	721	729
--	-----	-----	-----	-----	-----

Increase of standard wage compared to the previous year					
West	2.6%	2.7%	2.2%	1.5%	1.6%
East	3.0%	4.0%	2.2%	1.4%	1.6%

Strikes					
Employees involved	28,281	154,052	106,483	168,723	17,097
Missed working days	63,708	131,679	286,368	428,739	18,633

Economy/Finances

Gross Domestic Product (billion €, current prices)	FRG 2009	% change zu 2008	% change zu 2007	% change zu 2006	% change zu 2005
	2,409.1	-3.5%	-0.8%	3.6%	7.4%

Distribution of domestic product (in current prices, billion €)

Consumer spending					
Private spending	1,410.8	0.1%	2.7%	4.1%	6.5%
Public spending	473.5	4.8%	8.7%	11.3%	12.8%
Fixed investment	429.9	-9.4%	-5.6%	1.6%	10.0%

Government spending ratio (government purchases, in % of GDP)	FRG 2009	2008	2007	2006	2005
	47.3%	43.7%	43.7%	45.4%	46.8%

Insolvency	East 2009	change on prev. year	West 2009	change on prev. year	FRG change on prev. year
Companies	6,311	9.6%	26,376	12.1%	11.6%
Employees affected	36,397	50.6%	224,385	130.1%	114.3%

Hourly labour

productivity (€) ²¹	-	-	-	-	-2.2%
--------------------------------	---	---	---	---	-------

Cost of living (2005 = 100)	FRG 2009	2008	2007	2006	2005
	107.0	106.6	103.9	101.6	100.0

Total public budget (billion €)	FRG 2008	% change on 2007	% change on 2006	% change on 2005	% change on 2004
Tax revenue	1,021.1	-2.8%	0.5%	3.4%	8.1%
Spending ²²	1,126.7	6.7%	9.8%	-6.3%	-5.8%
Federal budget	346.5	9.4%	14.3%	16.8%	23.1%
Social Security	505.6	5.3%	8.2%	8.3%	7.8%
EU-contribution ²³	19.8	-11.5%	-7.2%	-6.4%	-40.5%
Federal states budgets	298.8	7.6%	12.2%	14.2%	15.2%
Local authorities ¹ budgets	177.2	6.0%	10.3%	13.8%	15.6%

Debt (billion €) ²⁴					
Federal state	1,053.8	6.9%	10.1%	10.9%	16.7%
Federal states	526.7	9.0%	8.7%	9.1%	11.8%
Local authorities	114.1	4.8%	3.1%	1.7%	-1.0%

Apprenticeship market

	East 2009	change on prev. year	West 2009	change on prev. year	FRG change on prev. year
New apprenticeships					
Unfilled apprenticeship training positions	98,998	-13.0%	467,006	-7.1 %	-8.2%
	2,644	-4.5%	14,500	-13.0%	-11.7%
Yet unplaced applicants					
(end of September)	4,513	3.6%	11,923	17.4 %	13.3%
Women	2,056	-3.9%	5,526	11.5 %	6.8%
Apprenticeship training positions supply-demand ratio					
(end of September) ²⁵	99.9%	1.2PP	101.6%	0.3PP	0.5PP

Environment / Health

Ratio of total primary energy consumption ²⁶	FRG 2009	2005	2000	1995	1990
coal	22.0%	23.7%	24.8%	26.6%	37.0%
mineral oil	35.0%	35.5%	38.2%	39.9%	35.0%
gas	22.0%	22.3%	20.7%	19.6%	15.4%
nuclear energy	11.0%	12.3%	12.9%	11.8%	11.2%
renewable energies	9.0%	6.1%	3.4%	2.0%	1.5%
Energy expenditure, per year and household (€)	FRG 2009	2008	2007	2006	2005
	2,443	2,687	2,381	2,483	2,345
Public transport:					
transported persons (in million)	10,666	10,551	10,433	10,382	10,185
Average life expectancy at birth	FRG 2007/09	2006/08	2005/07	2004/06	2003/05
Women	-	82.40	82.25	82.08	81.78
Men	-	7.17	76.89	76.64	76.21
Difference women/men (in years)	-	5.23	5.36	5.44	5.57
Occupational illnesses	FRG 2009	2008	2007	2006	2005
Application for status	61,622	55,184	55,645	53,955	53,576
Recognised status	15,228	12,244	12,718	13,365	14,920
Occupational accid. Travel/Commuting accidents	794,487	866,190	867,964	833,502	801,834
	149,819	149,601	141,180	158,769	151,641

Federal States in Comparison

	Unemployment Rate* (June 2009)				SC II-take-up rate ²⁷
	Total	Men	Women	Non-German nationals	
Baden-Wuerttemberg	4.7 %	4.8 %	4.7 %	10.6 %	3.2%
Bavaria	4.2 %	4.1 %	4.3 %	9.5 %	2.7%
Berlin	13.3 %	14.6 %	12.0 %	24.5 %	12.6%
Brandenburg	10.6 %	11.1 %	10.2 %	17.9 %	8.8%
Bremen	12.0 %	12.7 %	11.2 %	23.7 %	10.4%
Hamburg	8.0 %	8.6 %	7.3 %	15.5 %	7.9%
Hesse	6.3 %	6.3 %	6.4 %	13.9 %	5.0%
Mecklenburg-Western Pomerania	11.6 %	12.4 %	10.7 %	20.7 %	10.2%
Lower Saxony	7.3 %	7.3 %	7.3 %	18.2 %	5.7%
North Rhine-Westphalia	8.6 %	8.7 %	8.4 %	20.0 %	6.5%
Rhineland-Palatinate	5.5 %	5.6 %	5.5 %	12.2 %	4.2%
Saarland	7.3 %	7.3 %	7.4 %	17.6 %	5.8%
Saxony	11.5 %	11.6 %	11.4 %	24.1 %	8.8%
Saxony-Anhalt	12.3 %	12.4 %	12.2 %	24.5 %	10.6%
Schleswig-Holstein	7.1 %	7.5 %	6.8 %	18.2 %	5.8%
Thuringia	9.5 %	9.3 %	9.8 %	20.6 %	7.6%
FRG	7.5 %	7.6 %	7.4 %	15.4 %	5.9%

* based on persons in civilian employment

GDP (in billion €, at current prices)				% change on 2008	% change p. a. on 1995**
	2009	2008	1995		
Baden-Wuerttemberg	343.7	365.1	261.1	-5.8%	2.1%
Bavaria	429.9	444.8	305.1	-3.4%	2.7%
Berlin	90.1	88.6	79.9	1.7%	0.9%
Brandenburg	53.9	54.4	38.2	-0.9%	2.7%
Bremen	26.8	27.4	20.3	-2.5%	2.2%
Hamburg	85.8	87.5	64.8	-2.0%	2.2%
Hesse	216.5	221.4	162.7	-2.2%	2.2%
Mecklenburg-Western Pomerania	35.2	35.7	27.4	-1.3%	2.0%
Lower Saxony	205.6	213.1	161.6	-3.5%	1.9%
North Rhine-Westphalia	521.7	547.5	418.4	-4.7%	1.7%
Rhineland-Palatinate	102.5	106.4	83.0	-3.6%	1.6%
Saarland	28.9	31.1	23.3	-7.1%	1.6%
Saxony	92.9	94.9	69.9	-2.2%	2.2%
Saxony-Anhalt	51.5	53.7	38.6	-4.2%	2.2%
Schleswig-Holstein	73.4	73.9	59.2	-0.7%	1.7%
Thuringia	48.9	50.4	35.0	-3.0%	2.6%
FRG	2,407.2	2,495.8	1,848.5	-3.5%	2.1%

** The rate of change specifies the average annual change (p.a.) over the period 1995-2009.

EU in Comparison

	Union density ²⁸	Rate of poverty risk ²⁹	Employment rate ³⁰		Unemployment rate		G D P* capita
	2003	2008	2009		2009 ³¹		2009
	in %	in %	Total	Women	Total	Women	in PPS ³²
Belgium	47	27	61.6	56.0	7.9	8.1	115
Denmark	84	28	75.7	73.1	6.0	5.4	117
Germany	22	24	70.9	66.2	7.5	6.9	116
Greece	22	23	61.2	48.9	9.5	13.2	95 p
Spain	16	24	59.8	52.8	18.0	18.4	103
France	12	23	64.2	60.1	9.5	9.8	107
Ireland	40	34	61.8	57.4	11.9	8.0	131
Italy	28	23	57.5	46.4	7.8	9.3	102
Luxembourg	41	24	65.2	57.0	5.4	6.1	268
Netherlands	28	20	77.0	71.5	3.4	3.5	130
Austria	36	24	71.6	66.4	4.8	4.6	124
Portugal	16	25	66.3	61.6	9.6	10.3	78
Finland	76	28	68.7	67.9	8.2	7.6	110
Sweden	77	29	72.2	70.2	8.3	8.0	120
United Kingdom	30	29	69.9	65.0	7.6	6.4	117
EU (15)		25	65.9	59.9	9.0	9.0	111
Estonia	14	25	63.5	63.0	13.8	10.6	62
Latvia	18	30	60.9	60.9	17.1	13.9	49
Lithuania	11	27	60.1	60.7	13.7	10.4	53
Malta	-	23	54.9	37.7	6.9	7.6	78
Poland	20	25	59.3	52.8	8.2	8.7	-
Slovakia	31	18	60.2	52.8	12.0	12.8	72
Slovenia	45	23	67.5	63.8	5.9	5.8	86 b
Czech Republic	21	20	65.4	56.7	6.7	7.7	80
Hungary	18	30	55.4	49.9	10.0	9.7	63
Cyprus	50	22	69.9	62.5	5.3	5.5	98
Rumania	-	31	58.6	52.0	6.9	5.8	-
Bulgaria	-	27	62.6	58.3	6.8	6.6	-
European Union (EU) **		25	65.0	58.9	9.0	9.0	103

* Gross Domestic Product; **EU 25; - unavailable;
s: estimated values; f: forecast; P: preliminary values

Notes:

1. East Germany = new federal states and Berlin; West Germany = former federal territory excluding West Berlin
2. Classification of Economic Activities, Edition 2008 (WZ 2008)
3. Service industry: trade, transport and telecommunications, and other areas of economic activity (incl. credit and loan business, business services, public administration, public and private services)
4. Freelancers and assisting family members
5. Labour force participation rate for the 15- under 65-year age group, according to ILO-concept (employed + unemployed persons)
6. Work opportunities with an allowance (so called "additional jobs")
7. Share of employees' remuneration in the national income, minus effects resulting from changes in the employment structure. The labour share is calculated keeping total employment fixed at its level in 2009.
8. Employee earnings in manufacturing, retail, credit and insurance; blue-collar workers in manufacturing (incl. extraordinary payments); West incl. Berlin, East without Berlin
9. Pension insurance for white- and blue-collar workers; average pension contribution of those insured; pension age – 1st January
10. West Germany, incl. West Berlin
11. East Germany, incl. East Berlin
12. without data from authorised municipal institutions
13. Number of unemployed in %, based on employees
14. For single persons
15. Recipients of Unemployment Benefit II, and social welfare recipients, as a share of the population on 31.12.2009
16. Percentage of the population of the same age group, on 31.12.2009
17. In 2010, the earnings ceiling for social insurance contribution was 5,500 Euro per month in West Germany and 4,650 Euro in East-Germany (unemployment and pension insurance); employees have to pay a special contribution of 0.9% to health insurance; Childless employees pay an extra 0.25% to nursing insurance. Reduced health insurance contributions due to the Economic Stimulus Package II. Unemployment insurance contributions as of 1.7.2010.
18. Paid overtime
19. Share of employees with fixed-term employment contracts; excluding apprentices
20. In 2008 five so called European Companies (societas Europea) are included which have supervisory boards with equal representation of shareholders and employees but do not fall under the 1976 Co-Determination Act
21. Data in 2009 for East and West Germany are unavailable.
22. The sum of individual expenditure subitems exceeds total expenditure due to payments on the same level
23. Period 2003 - 2005: extraordinary federal state assets
24. From 2006 time comparison slightly distorted by changed statistical measurements
25. Number of apprenticeship training positions per 100 applicants
26. excluding foreign trade balance for electricity
27. Proportion of people receiving unemployment benefit II or social benefits in the total population on 31.12.2009
28. EU - Kommission, Industrial Relations in Europe 2006
29. Population below poverty level after social transfers; the poverty level is defined as 60% of national median equivalent income; EU25
30. Aged between 15 and 64 years
31. Annual average; aged between 15 and 74 years
32. PPS = Purchasing Power Standard, EU27 = 100, preliminary values

Note:

The data referred to is partly in rounded up figures. The amount of change against the basis or previous year's figures is based on the exact original figures. This explains the minimal variance between printed data and the changes referred to. As a rule, the 'territorial boundary east' refers to the new states and Berlin and 'west' refers to the former federal territory excluding Berlin. Any varying territorial boundaries are indicated by footnotes.

Abbreviations:

GDP	Gross Domestic Product
CGB	Christian Trade Union
DBB	German Union of Career Civil Servants
DGB	Confederation of German Trade Unions
IAB	Institute for Labour Market and Work Research
MC	Micro Census
p. a.	per annum
PP	percentage points
PPS	Purchasing Power Standard
SC	Social Code

The editor and staff would like to express their thanks to all those involved, in particular the Federal Statistical Office and the Federal Employment Office for their kind support.

WSI

Institute of Economic and Social
Research in the Hans-Böckler-Foundation
Hans-Böckler-Straße 39
D-40476 Düsseldorf
www.boeckler.de

Published by

Institute of Economic and Social Research in
the Hans-Böckler-Foundation (WSI)
Dr. Alexander Herzog-Stein
Tel.: +49 (0)211 7778-235
Fax: +49 (0)211 7778-4235
Alexander-Herzog-Stein@boeckler.de

Processing

Uwe Samland

Printing

Setzkasten GmbH
Kreuzbergstr. 56
40489 Düsseldorf
Fax: +49 (0)211 4080090-40
mail@setzkasten.de